



CHAMPION Flighted Conveyor

Operation Instructions, Technical Guide, And Parts List Information



For Models: L12/L16
(updated July 2017)

Superior Performance, Superior Value

Have this information ready when calling in about your equipment:

Model: _____ Serial #: _____

Warranty Start Date: _____

Model: _____ Serial #: _____

Warranty Start Date: _____

Model: _____ Serial #: _____

Warranty Start Date: _____

Model: _____ Serial #: _____

Warranty Start Date: _____

© Superior Paper Handling Solutions, Inc. All rights reserved.

Illustrations in this guide are for reference only and may depict optional features that are available at additional costs.

Superior Paper Handling Solutions, Inc.
7150 Boone Ave N, Suite 130
Brooklyn Park, Minnesota 55428 – USA

Tel. 763-546-9140
Fax. 763-546-8883
Email. info@Superior-PHS.com
Web. www.Superior-PHS.com

Superior Performance, Superior Value

Table of Contents

SECTION 1:MACHINE OVERVIEW AND SPECIFICATIONS 4

Both Models4

L124

L164

SECTION 2:OPERATION AND ADJUSTMENTS 5

Operation5

Product Setup.....5

Height Adjustment.....5

SECTION 3:PARTS 6

L-16 Conveyor6

L-12 Conveyor 14

SECTION 4:WIRING AND ELECTRICAL DETAIL..... 21

Standard Controller21

SECTION 5:WARRANTY..... 21

SECTION 1: MACHINE OVERVIEW AND SPECIFICATIONS

Both Models

The CHAMPION flighted conveyor is designed to increase speed and maximize automatic L-sealer production lines while economically simplifying the process of gathering and transporting collated sets of materials.

The flight carriers are driven by a dual-chain that allows the flight pin to advance all the way to the end of the conveyor and disappear vertically. This unique feature allows the material to transfer without disrupting the stack integrity.

Easy-to-adjust material guide rails accommodate a wide variety of product types and thicknesses.

The high-quality robust design of the CHAMPION will provide long, durable, and reliable operation, requiring little maintenance.

L12

Product Sizes:	Min. 3"W x 3" L – Max 12"W x Variable (dependent on lug spacing)
Standard Lengths	6', 12'
Maximum Speed:	Variable speeds up to: 1000 FT/MIN - Continuous run 30 PPM w/1S hold – Index run
Product Stack Height:	2" standard
Deck Height	30"-39"
Utilities Requirement:	115VAC/60Hz – 3 to 6 amp dependent on controller
Options:	Indexing Motion Controller w/various system controller options, Remote Interface Cable, Feeder Table and Stand Mounts.

L16

Product Sizes:	Min. 3"W x 3" L – Max 16"W x Variable (dependent on lug spacing)
Standard Lengths:	6', 8', 12', or any combination of those lengths up to 100'.
Maximum Speed:	Variable speeds up to: 1000 FT/MIN - Continuous run 30 PPM w/1S hold – Index run
Product Stack Height:	2" standard (higher side guides and flight pins are available up to 6")
Deck Height:	30"-39"
Utilities Requirement:	115VAC/60Hz – 3 to 6 amp dependent on controller
Options:	Indexing Motion Controller w/various system controller options, Remote Interface Cable, Feeder Table and Stand Mounts.

SECTION 2: OPERATION AND ADJUSTMENTS

Operation

CHAMPION Flighted Conveyors operate on standard 115vac and are rated at 3-6 Amps dependent on type of conveyor and controller option. Both models come equipped with a STANDARD controller offering continuous run cycle with downstream inhibit.

Make sure the push/pull Stop switch is pressed in before applying power to the unit.

Once the 115vac source has been established, turn the Speed potentiometer fully counter clock wise (lowest setting).

Release the Stop button by pulling it out...this will apply power to the controls. Press the green start button. The conveyor will start to run as you adjust the speed clockwise. Set to desired speed.

Product Setup

Center the product on the conveyor. Adjust the rails to accommodate the product width. Tighten the rail adjusters.

Height Adjustment

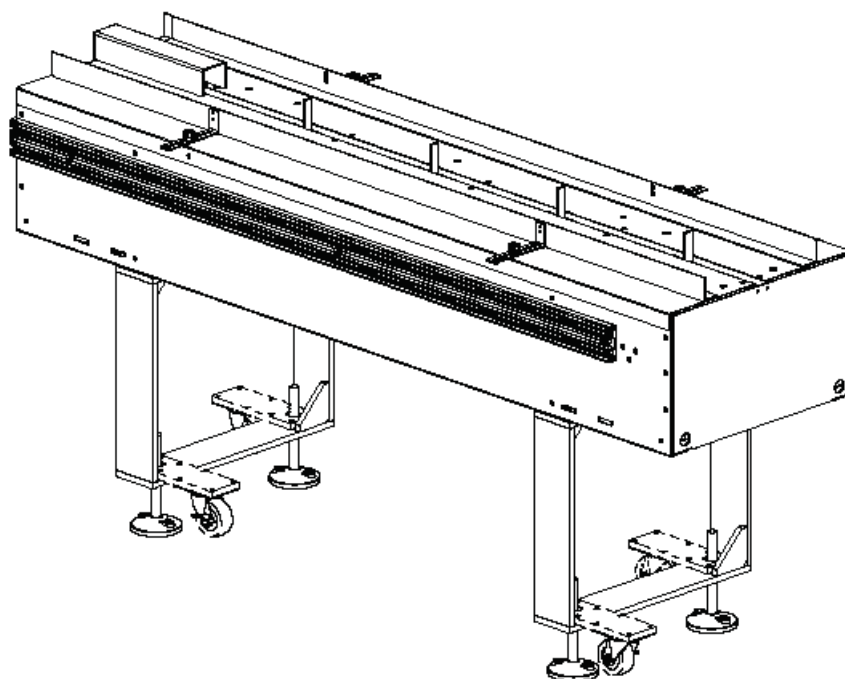
Both models have leveling feet for adjusters. Be sure to lock both nuts on each leveling foot as you set your height

SECTION 3: PARTS

L-16 Conveyor

Pages 7-13

500041
6' CHAMPION L-16 CONVEYOR

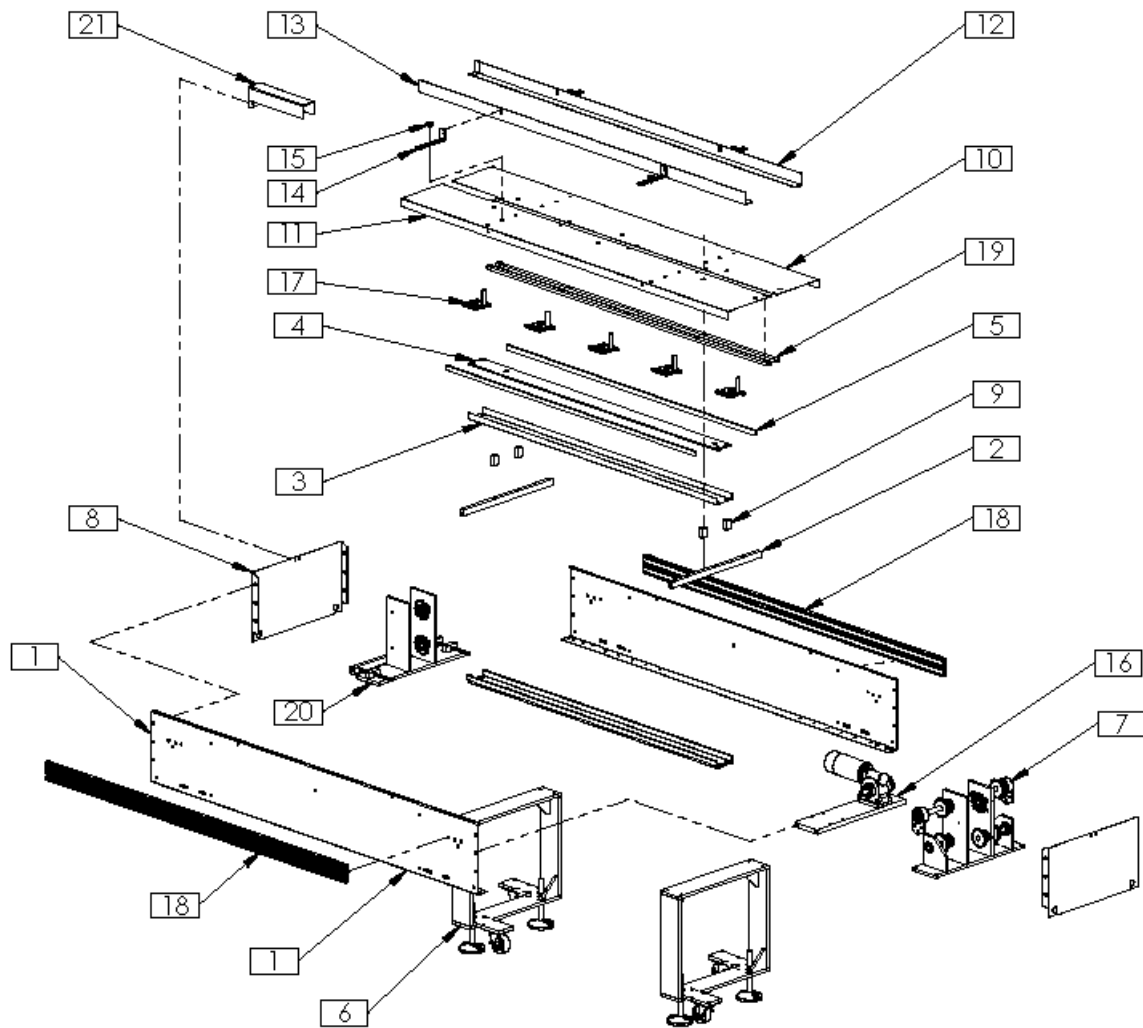


A

Superior

PAPER HANDLING SOLUTIONS

PROPRIETARY AND CONFIDENTIAL
THE INFORMATION CONTAINED IN THE
DRAWING IS THE SOLE PROPERTY OF
SUPERIOR PAPER HANDLING SOLUTIONS. ANY
REPRODUCTION IN PART OR AS A WHOLE
WITHOUT THE WRITTEN PERMISSION OF
SUPERIOR PAPER HANDLING SOLUTIONS IS
PROHIBITED.



ITEM NO.	PartNo	DESCRIPTION	QTY.
1	101083	UNIVERSAL SIDE PANEL	2
2	101050	CROSS BAR SUPPORT	2
3	101075	CHAIN TRAY RETURN	2
4	301298	FLAT UHMW	2
5	301299	J-LET PROFILE	4
6	400141	CONVEYOR LEG ASSEMBLY	2
7	400142	DUAL DRIVE ASSEMBLY	1
8	101005	END PANEL	2
9	101009	TOP PANEL SUPPORT	4
10	301369	TOP PLATE LEFT	1
11	301371	TOP PLATE RIGHT	1

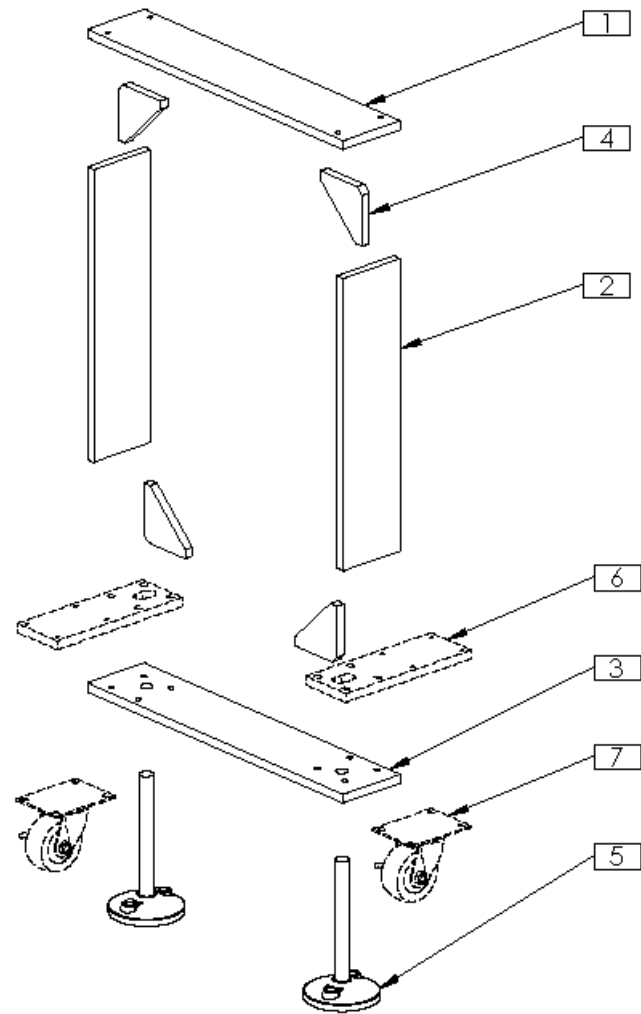
ITEM NO.	PartNo	DESCRIPTION	QTY.
12	101070	LEFT PAPER RAIL	1
13	101071	RIGHT PAPER RAIL	1
14	101087	PAPER MOUNT RAIL	4
15	100391	KNOB	4
16	400221	MOTOR PLATE ASSEMBLY	1
17	400189	LUG ASSEMBLY	5
18	301373	CHANNEL	2
19	301370	CHAIN WEAR BAR	2
20	400143	IDLER CONVEYOR	1
21	301595	LUG COVER	1

PROPRIETARY AND CONFIDENTIAL
THE INFORMATION CONTAINED IN THIS DRAWING IS THE SOLE PROPERTY OF SUPERIOR PAPER HANDLING SOLUTIONS. ANY REPRODUCTION IN PART OR AS A WHOLE WITHOUT THE WRITTEN PERMISSION OF SUPERIOR PAPER HANDLING SOLUTIONS IS PROHIBITED.

Superior
PAPER HANDLING SOLUTIONS

500041

CONVEYOR LEG ASSEMBLY



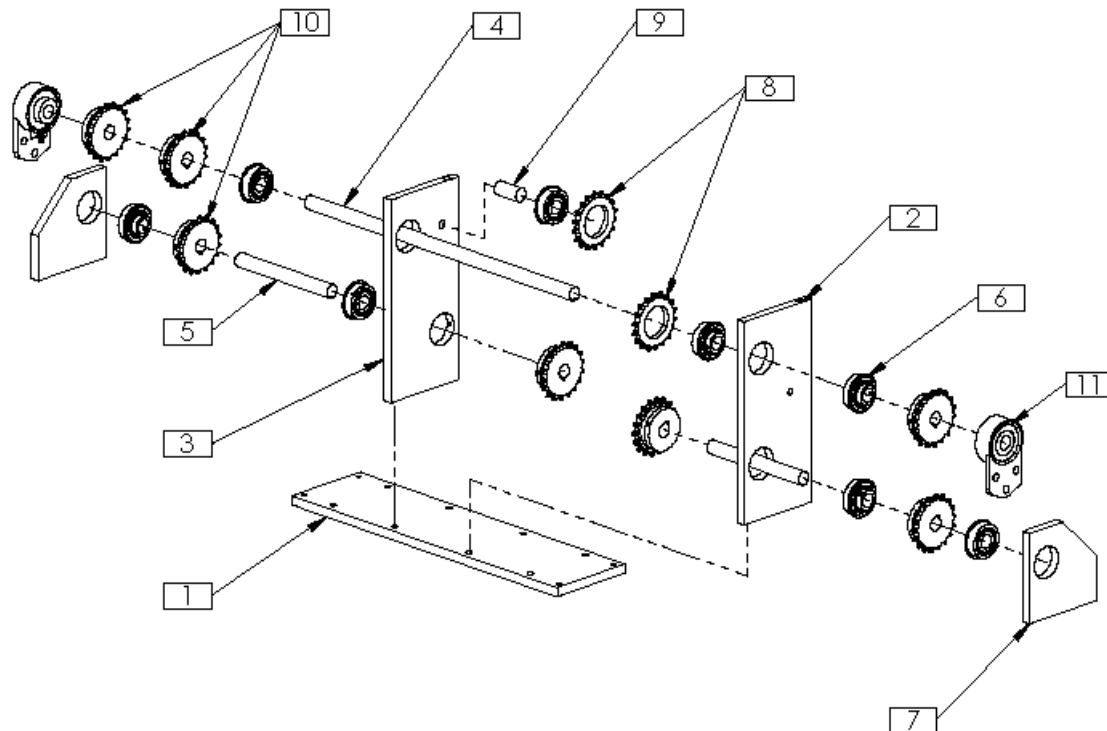
ITEM NO.	Part No	DESCRIPTION	QTY.
1	300916	TOP LEG PLATE	1
2	300917	VERTICAL LEG	2
3	300918	BOTTOM LEG PLATE	1
4	300668	GUSSET PLATE	4
5	101057	PEDESTAL FOOT	2
6	300919	CASTER MOUNT PLATE	2
7	101067	CASTER	2

PROPRIETARY AND CONFIDENTIAL
THE INFORMATION CONTAINED IN THIS DRAWING IS THE SOLE PROPERTY OF SUPERIOR PAPER HANDLING SOLUTIONS. ANY REPRODUCTION IN PART OR AS A WHOLE WITHOUT THE WRITTEN PERMISSION OF SUPERIOR PAPER HANDLING SOLUTIONS IS PROHIBITED.

Superior
PAPER HANDLING SOLUTIONS

400141

DUAL DRIVE ASSEMBLY



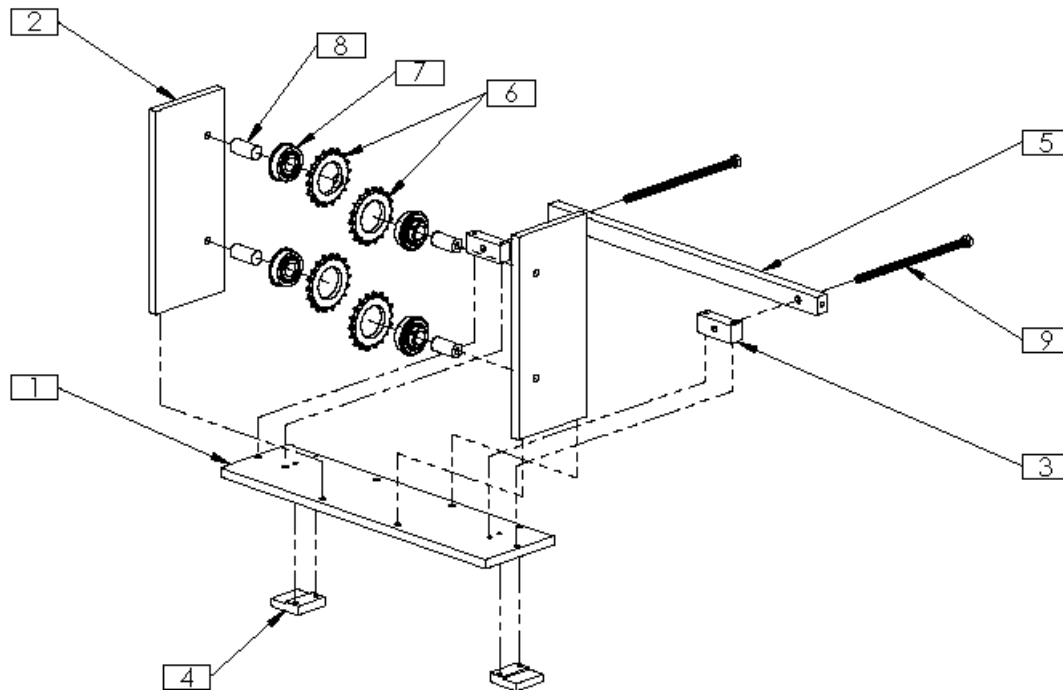
ITEM NO.	PartNo	DESCRIPTION	QTY.
1	101001	MOTORMOUNT PLATE	1
2	300923	DRIVE PLATE RIGHT	1
3	300924	DRIVE PLATE LEFT	1
4	101008	DRIVE SHAFT	1
5	300685	JACK SHAFT	2
6	105031	BEARING	8
7	300925	SHAFT DRIVE PLATE	2
8	101061	SPROCKET IDLER	2
9	101052	IDLER SPROCKET POST	1
10	101055	SPROCKET	7
11	350122	BALL BEARING	2

PROPRIETARY AND CONFIDENTIAL
THE INFORMATION CONTAINED IN THIS DRAWING IS THE SOLE PROPERTY OF SUPERIOR PAPER HANDLING SOLUTIONS. ANY REPRODUCTION IN PART OR AS A WHOLE WITHOUT THE WRITTEN PERMISSION OF SUPERIOR PAPER HANDLING SOLUTIONS IS PROHIBITED.

Superior
PAPER HANDLING SOLUTIONS

400142

IDLER CONVEYOR ASSEMBLY



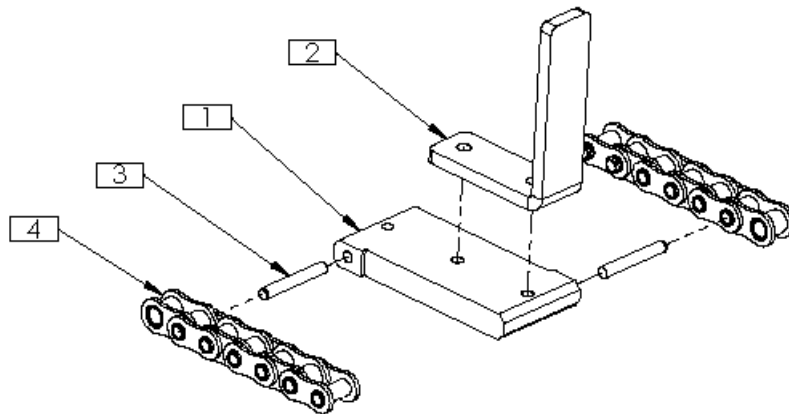
ITEM NO.	PartNo	DESCRIPTION	QTY.
1	101007	MOUNT PLATE	1
2	101046	IDLER UPRIGHT PLATE	2
3	101044	TAKE UP BLOCK	2
4	101045	SLIDE CLAMP TAKE UP	2
5	101043	IDLER TAKE UP CROSS BAR	1
6	101061	SPROCKET IDLER	4
7	105031	BEARING	4
8	101052	IDLER SPROCKET POST	4
9	101060	TENSIONING BOLT	2

PROPRIETARY AND CONFIDENTIAL
THE INFORMATION CONTAINED IN THIS DRAWING IS THE SOLE PROPERTY OF SUPERIOR PAPER HANDLING SOLUTIONS. ANY REPRODUCTION IN PART OR AS A WHOLE WITHOUT THE WRITTEN PERMISSION OF SUPERIOR PAPER HANDLING SOLUTIONS IS PROHIBITED.

Superior
PAPER HANDLING SOLUTIONS

400143

2.75 INCH LUG ASSEMBLY



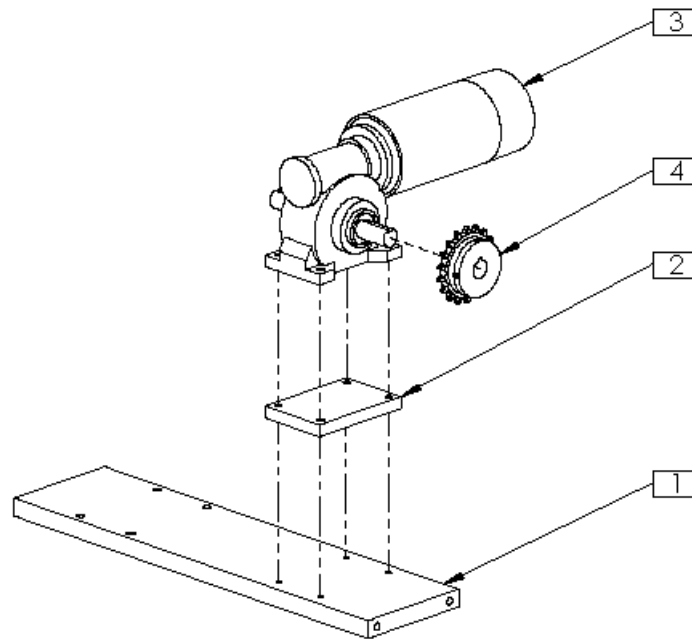
ITEM NO.	Part No	DESCRIPTION	QTY.
1	300941	LUG	TB T
2	301202	LUG	TB T
3	101062	PIN	TB T
4	101054	CHAIN	TB T

PROPRIETARY AND CONFIDENTIAL
THE INFORMATION CONTAINED IN THIS DRAWING IS THE SOLE PROPERTY OF SUPERIOR PAPER HANDLING SOLUTIONS. ANY REPRODUCTION IN PART OR AS A WHOLE WITHOUT THE WRITTEN PERMISSION OF SUPERIOR PAPER HANDLING SOLUTIONS IS PROHIBITED.

Superior
PAPER HANDLING SOLUTIONS

400189

MOTOR PLATE ASSEMBLY



ITEM NO.	Part No	DESCRIPTION	QTY.
1	301372	MOTORMOUNT PLATE	1
2	101002	MOTOR SPACER PLATE	1
3	101069	MOTOR	1
4	101055	SPROCKET	1

PROPRIETARY AND CONFIDENTIAL
THE INFORMATION CONTAINED IN THIS DRAWING IS THE SOLE PROPERTY OF SUPERIOR PAPER HANDLING SOLUTIONS. ANY REPRODUCTION IN PART OR AS A WHOLE WITHOUT THE WRITTEN PERMISSION OF SUPERIOR PAPER HANDLING SOLUTIONS IS PROHIBITED.

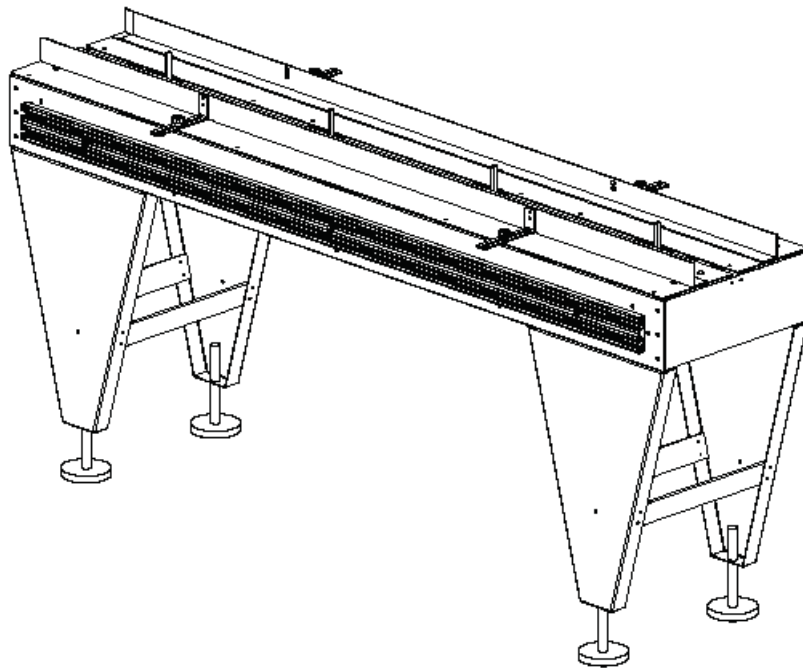
Superior
PAPER HANDLING SOLUTIONS

400221

L-12 Conveyor

Pages 15-20

500036
L-12 CONVEYOR (6')

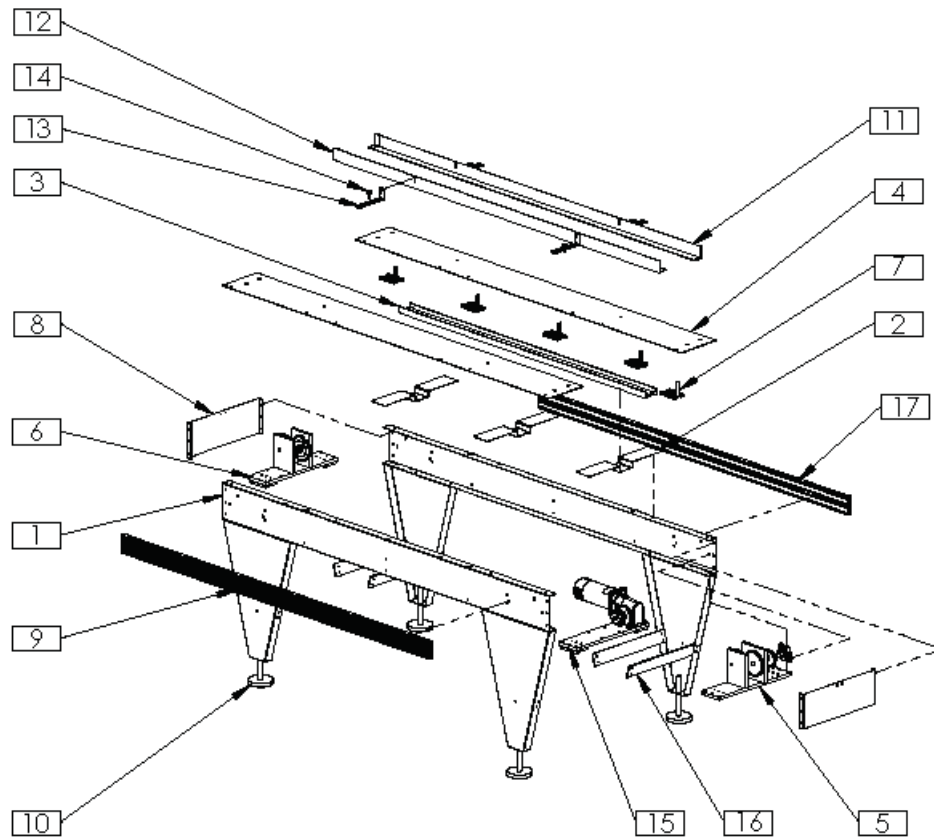


A

Superior

PAPER HANDLING SOLUTIONS

PROPRIETARY AND CONFIDENTIAL
THE INFORMATION CONTAINED IN THE
DRAWING IS THE SOLE PROPERTY OF
SUPERIOR PAPER HANDLING SOLUTIONS. ANY
REPRODUCTION IN PART OR AS A WHOLE
WITHOUT THE WRITTEN PERMISSION OF
SUPERIOR PAPER HANDLING SOLUTIONS IS
PROHIBITED.

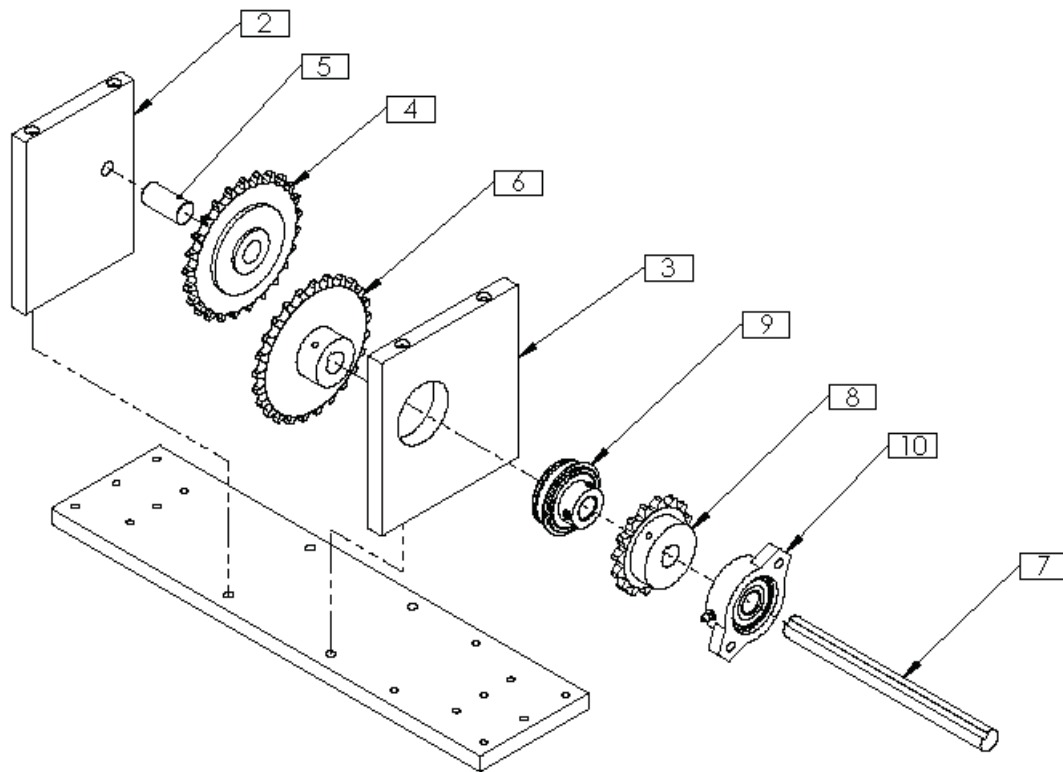


ITEM NO.	Part No	DESCRIPTION	QTY.
1	301094	6 FOOT PANEL	2
2	301095	CHASSIS RIB	3
3	301096	CHAIN TRAY	1
4	301097	6 FOOT UNIVERSAL TOP DECK	2
5	400167	CONVEYOR DRIVE END ASSEMBLY	1
6	400168	CONVEYOR IDLER ASSEMBLY	1
7	400169	2.5" ONE PIECE LUG ASSEMBLY	5
8	301102	CONVEYOR END PANEL	2
9	301112	LEG	4
10	301313	PEDESTAL FOOT	4
11	101070	LEFT PAPER RAIL	1
12	101071	RIGHT PAPER RAIL	1
13	101087	PAPER MOUNT RAIL	4
14	100391	KNOB	4
15	400181	MOTOR DRIVE ASSEMBLY	1
16	301314	LEG BRACE	4
17	301631	EXTRUSION	2

PROPRIETARY AND CONFIDENTIAL
THE INFORMATION CONTAINED IN THIS DRAWING IS THE SOLE PROPERTY OF SUPERIOR PAPER HANDLING SOLUTIONS. ANY REPRODUCTION IN PART OR AS A WHOLE WITHOUT THE WRITTEN PERMISSION OF SUPERIOR PAPER HANDLING SOLUTIONS IS PROHIBITED.

Superior
PAPER HANDLING SOLUTIONS

Assembly Number: **500036**



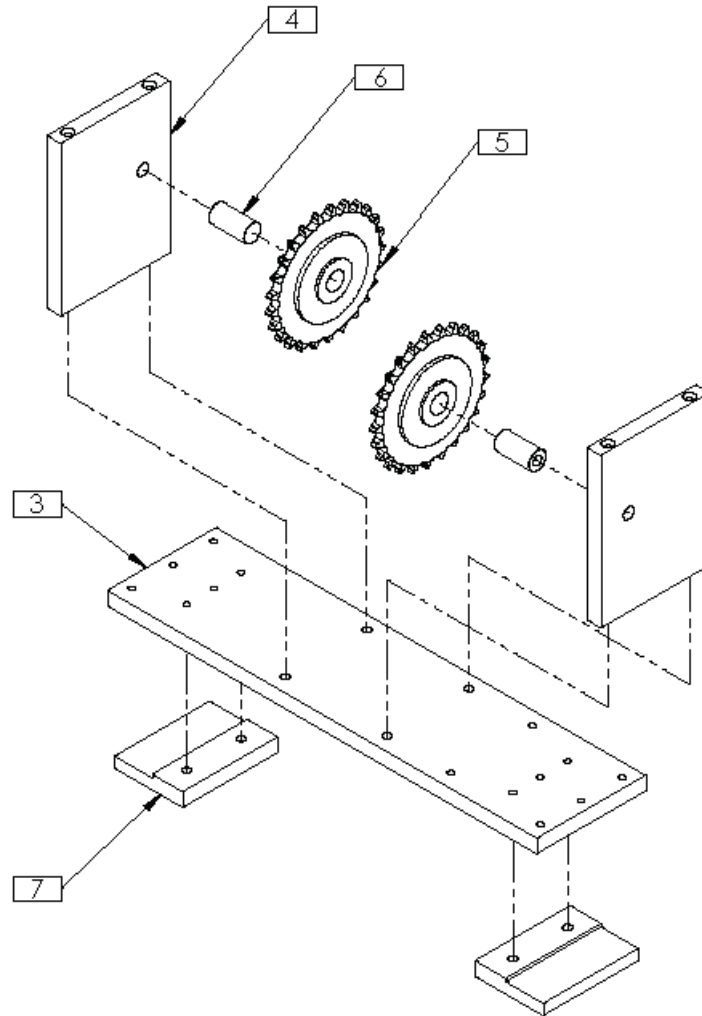
ITEM NO.	Part No	DESCRIPTION	QTY.
1	301098	BASE PLATE	1
2	301099	VERTICAL IDLER PLATE	1
3	301106	MOTOR DRIVE PLATE	1
4	301182	IDLER SPROCKET W/BEARING	1
5	301101	IDLER SPROCKET POST	1
6	301135	SPROCKET	1
7	301180	DRIVE SHAFT	1
8	301137	SPROCKET	1
9	301183	FLANGE BEARING	1
10	301184	BEARING	1

PROPRIETARY AND CONFIDENTIAL
THE INFORMATION CONTAINED IN THIS DRAWING IS THE SOLE PROPERTY OF SUPERIOR PAPER HANDLING SOLUTIONS. ANY REPRODUCTION IN PART OR AS A WHOLE WITHOUT THE WRITTEN PERMISSION OF SUPERIOR PAPER HANDLING SOLUTIONS IS PROHIBITED.

Superior
PAPER HANDLING SOLUTIONS

Assembly Number: **400167**

CONVEYOR DRIVE ASSEMBLY



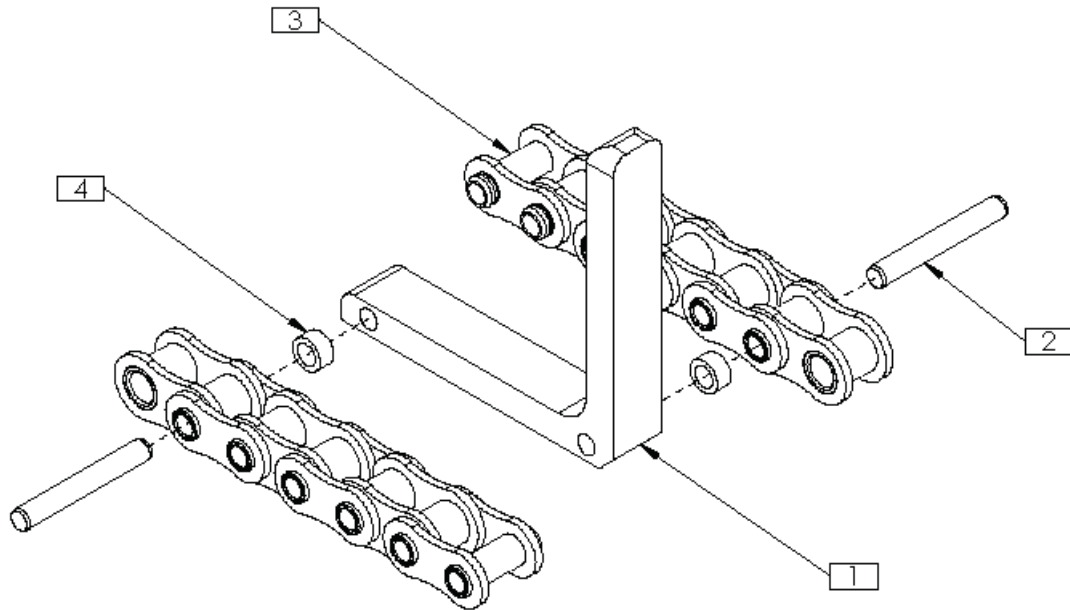
ITEM NO.	PartNo	DESCRIPTION	QTY.
3	301098	BASE PLATE	1
4	301099	VERTICAL IDLER PLATE	2
5	301182	IDLER SPROCKET IN BEARING	2
6	301101	IDLER SPROCKET POST	2
7	301105	IDLER CLAMP	2

PROPRIETARY AND CONFIDENTIAL
THE INFORMATION CONTAINED IN THIS DRAWING IS THE SOLE PROPERTY OF SUPERIOR PAPER HANDLING SOLUTIONS. ANY REPRODUCTION IN PART OR AS A WHOLE WITHOUT THE WRITTEN PERMISSION OF SUPERIOR PAPER HANDLING SOLUTIONS IS PROHIBITED.

Superior
PAPER HANDLING SOLUTIONS

Assembly Number: **400168**

2.5 INCH ONE PIECE LUG ASSMEBLY



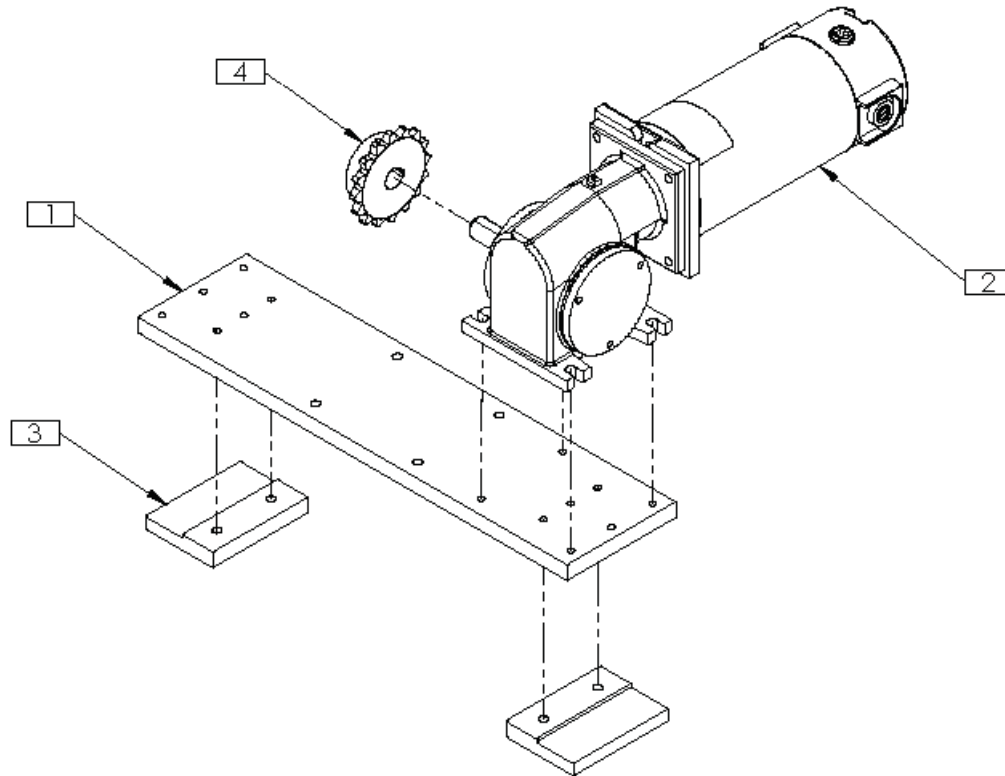
ITEM NO.	PartNo	DESCRIPTION	QTY.
1	301113	LUG	TBT
2	301115	DOWEL PIN	TBT
3	101054	CHAIN	TBT
4	301114	SPACER	TBT

PROPRIETARY AND CONFIDENTIAL
THE INFORMATION CONTAINED IN THIS DRAWING IS THE SOLE PROPERTY OF SUPERIOR PAPER HANDLING SOLUTIONS. ANY REPRODUCTION IN PART OR AS A WHOLE WITHOUT THE WRITTEN PERMISSION OF SUPERIOR PAPER HANDLING SOLUTIONS IS PROHIBITED.

Superior
PAPER HANDLING SOLUTIONS

Assembly Number: **400169**

MOTOR DRIVE ASSEMBLY



ITEM NO.	Part No	DESCRIPTION	QTY.
1	301098	BASE PLATE	1
2	301181	DC MOTOR	1
3	301105	IDLER CLAMP	2
4	301137	SPROCKET	1

PROPRIETARY AND CONFIDENTIAL
THE INFORMATION CONTAINED IN THIS DRAWING IS THE SOLE PROPERTY OF SUPERIOR PAPER HANDLING SOLUTIONS. ANY REPRODUCTION IN PART OR AS A WHOLE WITHOUT THE WRITTEN PERMISSION OF SUPERIOR PAPER HANDLING SOLUTIONS IS PROHIBITED.

Superior
PAPER HANDLING SOLUTIONS

Assembly Number: **400181**

SECTION 4: WIRING AND ELECTRICAL DETAIL

Standard Controller

Wiring Diagram for a STANDARD control box shown below.

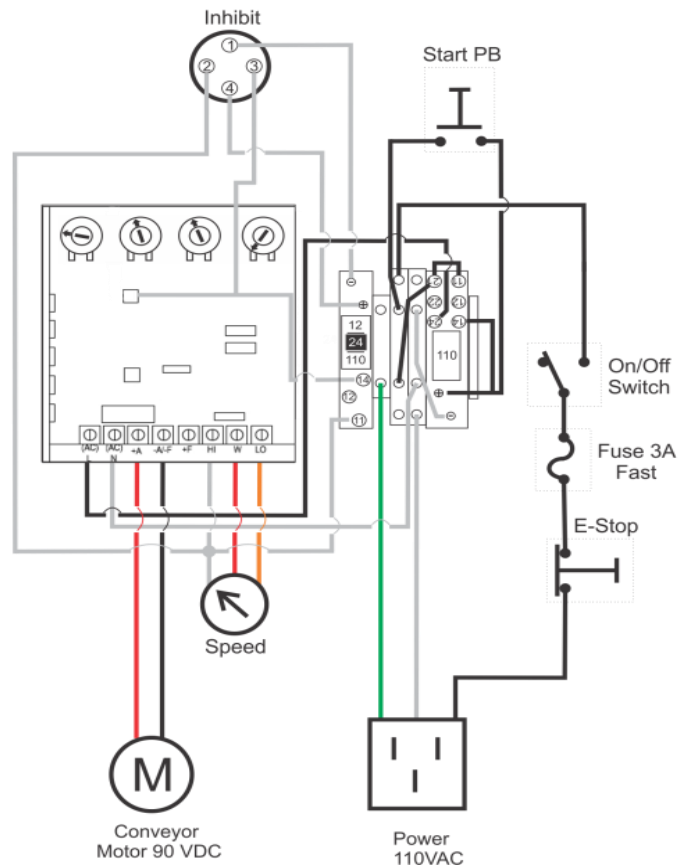
(For all different controllers, reference the supplied manual for wiring and schematic details)

L-12/L16 STANDARD Controller

Inhibit:

Pins 2 and 3 - Dry contact.
**DO NOT PROVIDE VOLTAGE
ACROSS PINS 2 AND 3**
Held closed, conveyor will stop.
Opened, conveyor will run.

Pins 1 and 4 - Require a 24VDC
voltage to stop the conveyor.
V+ on pin 4, V- on pin 1
(Standard 24VDC relay used.
Must order 12VDC or 110VAC
if wanting a different control voltage)



STD - Dry Contact or Power
Supplied (24VDC) Inhibit.
(12VDC and 110VAC optional at
time of purchase

SECTION 5: WARRANTY

Limited Warranty

Superior Paper Handling Solutions (Superior) warrants this product to be free from defects in materials and workmanship, when used under recommended operating conditions for a period of one year from the date of original retail purchase.

If a defect is discovered during the warranty period, Superior (or authorized agent) will make the repairs at no charge. If the defect is not field repairable, the entire unit should be returned to Superior who will, at its sole option, repair or replace the product at no charge, other than shipping expenses to and from the Superior facility in Minneapolis, Minnesota, USA. All returns require prior approval by an authorized Superior employee and must have a Return Goods Authorization number.

This warranty applies only to products manufactured by Superior. The warranty is void if the product has been damaged by accident, abuse, misuse, neglect, improper maintenance, misapplication, or as a result of being attached to equipment not supplied by Superior; if the unit has been modified without the written permission of Superior; or if the units serial number has been removed or defaced. This warranty does not apply to the failure of any rubber based or consumable components including, but not limited to, "o" rings, belts, rollers, fuses, or lamps.

Superior is not responsible for special, incidental, or consequential damages resulting from any breach of warranty or under any other legal theory, including lost profits, downtime, goodwill, or damage to or replacement of equipment or property.

This warranty and the remedies set forth above are exclusive and are in lieu of all others, oral or written, expressed or implied. There are no warranties that extend beyond the description on the face hereof. No Superior employee or authorized agent is authorized to make any modification, extension, or addition to this warranty.

Notes
