



Xtreme Operator's Manual

Model: On Edge Placer

500086 (Left to Right)

PATENT PENDING



Illustrations in this guide are for reference only and may depict optional features that are available at additional costs.

CONTENTS

OVERVIEW & SPECIFICATIONS3

INSTALLATION INSTRUCTIONS4

 ALIGNING PLACER TO STITCHER5

 INSTALLING TRIGGER ASSEMBLY7

 TESTING AND SECURING8

PLACER PRODUCT SETUP9

MAINTENANCE12

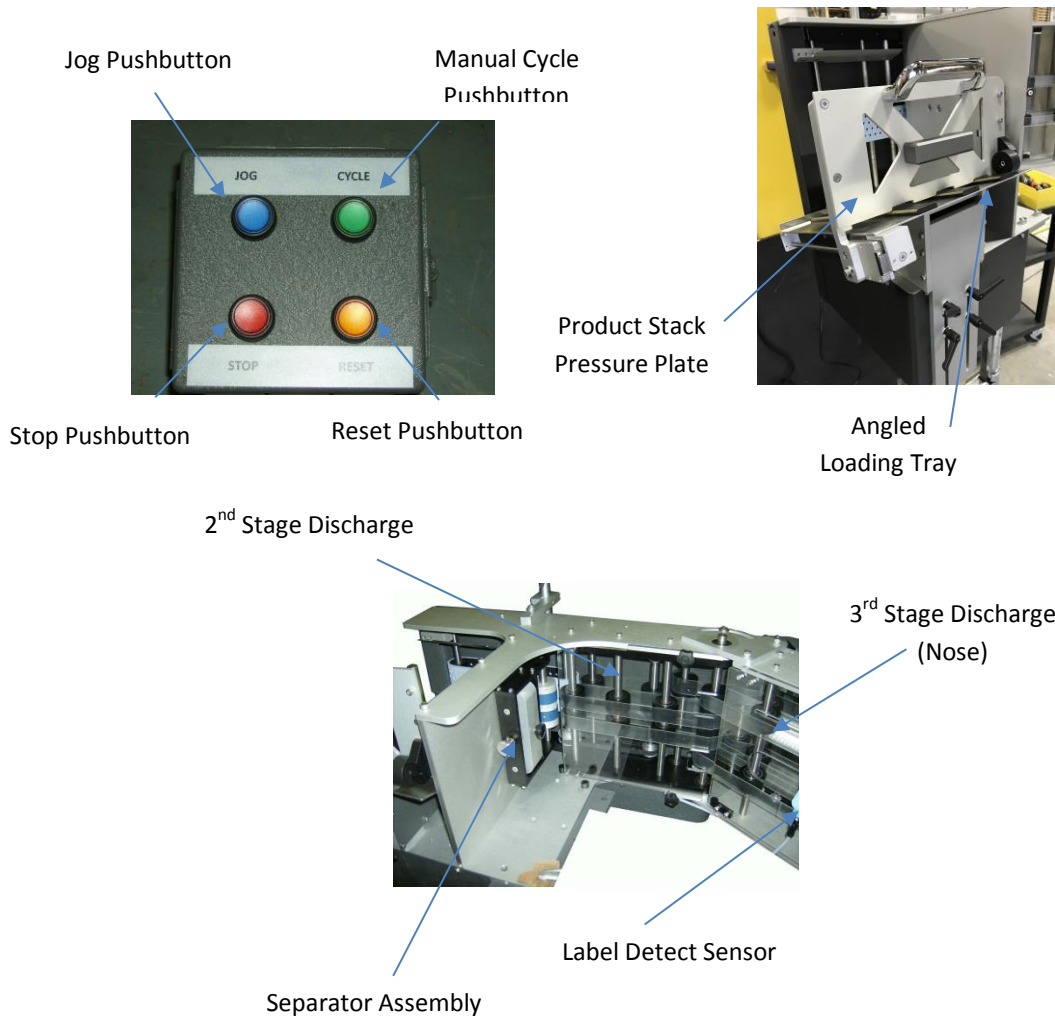
WIRING SCHEMATIC13

ILLUSTRATED PARTS14

WARRANTY26

NOTES27

OVERVIEW & SPECIFICATIONS



PRODUCT SIZES:

PRODUCT THICKNESS:

SPEED:

WEIGHT:

Min. 3.5"H x 5" L – Max 11"H x 11"L

30# to 110#, flat or folded

30 PPM

Feeder - 110 lbs (50 kg)

Stand - 55 lbs (25 kg)

INSTALLATION INSTRUCTIONS



Important! – The installation of the stand and feeder will require at least two people. Please use safety standards/practices that are established at your facility when unpacking, moving, and installing the equipment.

The following instructions are based on the assumption that the old label feeder equipment and mechanics have been removed from the line.

Prior to installation, it is good practice to become familiar with your machine by reviewing this manual completely.

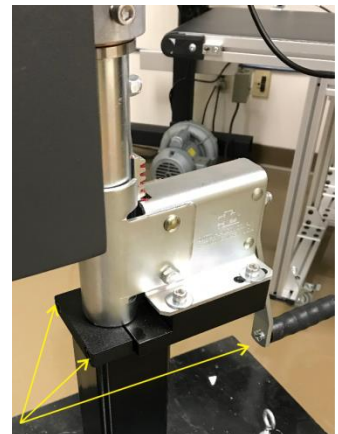


ALIGNING PLACER TO STITCHER

1. With the dispenser and stand positioned in the general vicinity of installation, mount the dispenser to the stand using the 4 provided screws. **CAUTION - Until the stand is anchored to the floor, a person must remain at the machine to balance it until the final position is determined and the machine is securely anchored to the floor!**



2. Loosen the stand clamp screws to adjust the height of the machine. Once the clamp is loose, adjust the height by turning the crank handle.

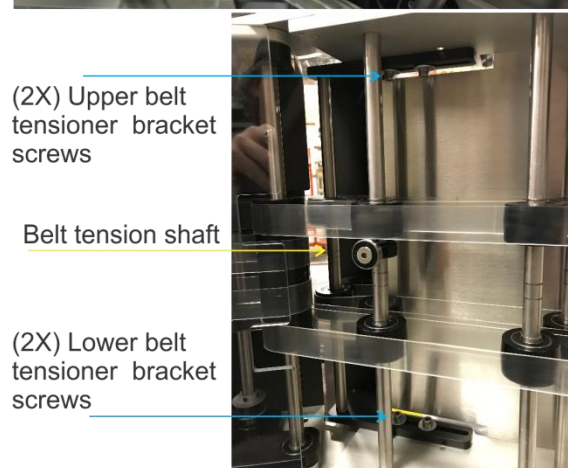
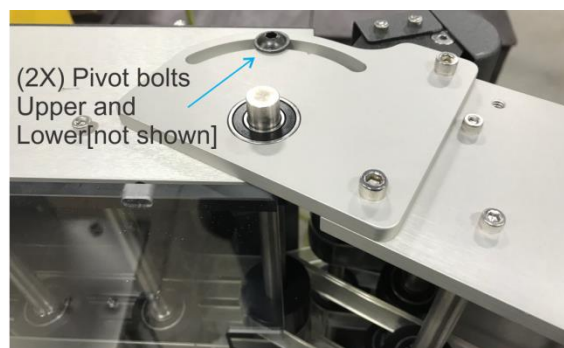


3. Align the machine so that when properly adjusted, the bottom of the discharge pulleys is positioned just above the pinch belt assembly of the stitching machine.

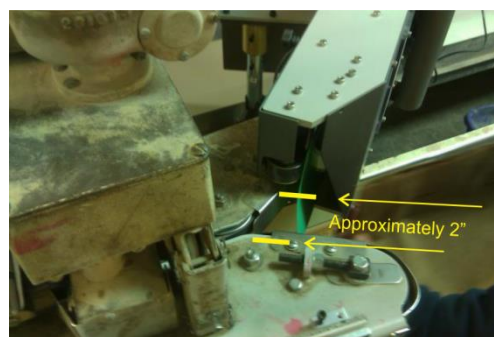
Retighten clamp in #2 once correct height has been established.



NOTE As you position the machine in place, please note that the discharge angle is adjustable to accommodate your floor plan. To adjust, loosen the 2 pivot bolts and the 4 belt tensioner bolts and adjust nose to desired angle. Make sure to adjust the tensioning brackets to accommodate the change in belt tensioning. Tighten all 6 bolts when set.



4. Position the machine approximately 2" away from pinch point of belts.

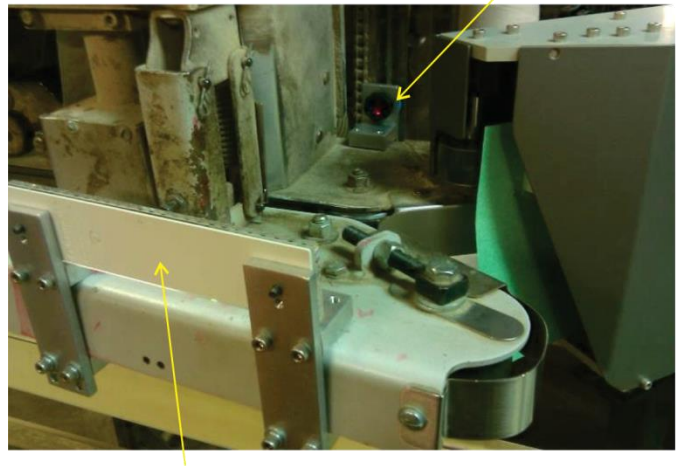


INSTALLING TRIGGER ASSEMBLY

While one person continues to balance the machine, another person can mount the trigger assembly.

This kit will mount to the top side of the belt assembly of the stitching machine. The adjustable brackets will allow the kit to "clamp" to the metal frame of the belts. For cabling purposes, it's recommended to mount the sensor portion of the kit to the back side of the machine as shown below. In this position, the top of the bag will "break" the beam and trigger the dispenser to feed a label as the bag is being moved into the pinch belts. Placement of the label will be approximately at the middle of the bag.

Photo-sensor bracket assembly



Reflector bracket assembly

TESTING AND SECURING

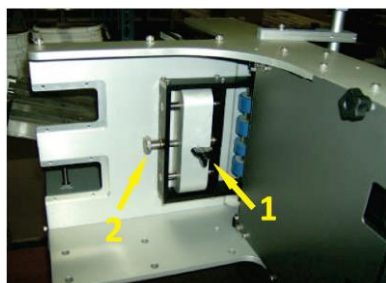
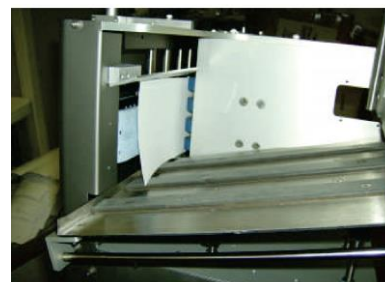
1. Attach the power cord and plug into a grounded outlet. Move the power switch to the "On" (I) position. Manually cycle the machine so that there is a label staged at the discharge of the unit. Now, run the line to advance a filled bag through to check the timing and placement of the label onto the bag. You may need to run a few through and make some adjustments before determining the best position and settings.
2. Once you have determined correct placement of the labels, mark the holes on the floor where the stand will be positioned. Remove the machine from this area and drill 4 holes for lag bolts (not included). Once the holes have been drilled, move the machine back into position and line up the holes. Finally, anchor the machine to the floor.



PLACER PRODUCT SETUP

STEP 1

With the rear slide assembly out of the way, insert one-piece of product between the separating rollers and feed belt.



STEP 2

Unlock the Separator by loosening the front lock knob 1.

Turn the Separator adjust knob 2 until there is a resistance on the product (gently slide the product in and out while adjusting the knob)

When complete, retighten the front lock knob.

STEP 3

Load additional product onto the hopper plate and position rear slide assembly 3 onto product. Adjust tray up or down to align product with placement onto the bag.



Troubleshooting tips-

If product seems to be struggling coming out of the stack and into the discharge, the separator may be set too tight.

If double feeding is occurring, the separator may be set too loose.

STEP 4

Switch power to "ON" position (I)

Note: there is a 2-second initialization period.



STEP 5

After initialization, the operator panel will illuminate the Reset push-button.

NOTE-Only the illuminated buttons are active.

STEP 6

Push the Reset push-button to bring the feeder into "Ready" mode. Ready mode will be indicated by illuminated Jog, Cycle, and Stop buttons.



In Ready mode, the feeder can be "Jogged", "Cycled", or "Stopped" simply by pressing the corresponding push-button.

Pressing the Jog button will advance the machine until the button is released.

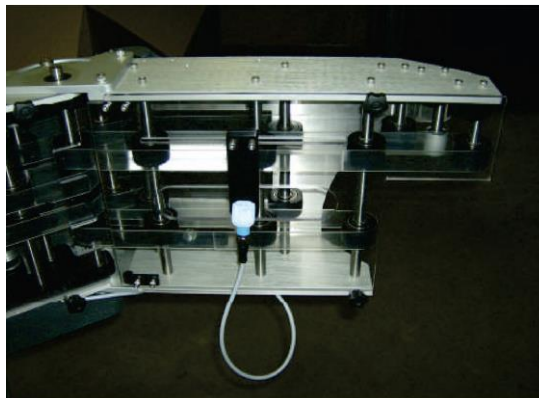
Pressing the Cycle button will begin a complete manual feed cycle of the machine and stop.

Pressing the Stop button will instantly stop the machine and take the feeder out of Ready mode. Push Reset button to re- turn to Ready mode.

STEP 7

Set the Product Detect sensor based on the length of the label. A good starting reference is to set so that the label is flush to the end of the feeder discharge. Then adjust from there

This sensor triggers from the trailing edge of the label. When changing label sizes, the position of where the label needs to feed to will change and will require adjustment of the stopping position.



MAINTENANCE

Please remember that all maintenance and service to the OnEdge-1 Versatile Feeding Solution should only be performed by qualified technicians. Always disconnect power before attempting any maintenance or service procedure.

Belts

Over time, you will notice “build-up” on the feed and discharge belts and the separator rollers. This is normal and is usually from the dust, finish, or coating normally on the products fed. Regular cleaning of the belts and rollers will extend their life.

Belts, pulleys, and rollers should only be cleaned with Isopropyl Alcohol.

A good practice is to clean the belts and rollers weekly. If running UV or Aqueous coated materials, daily cleanings are recommended.

Sensors

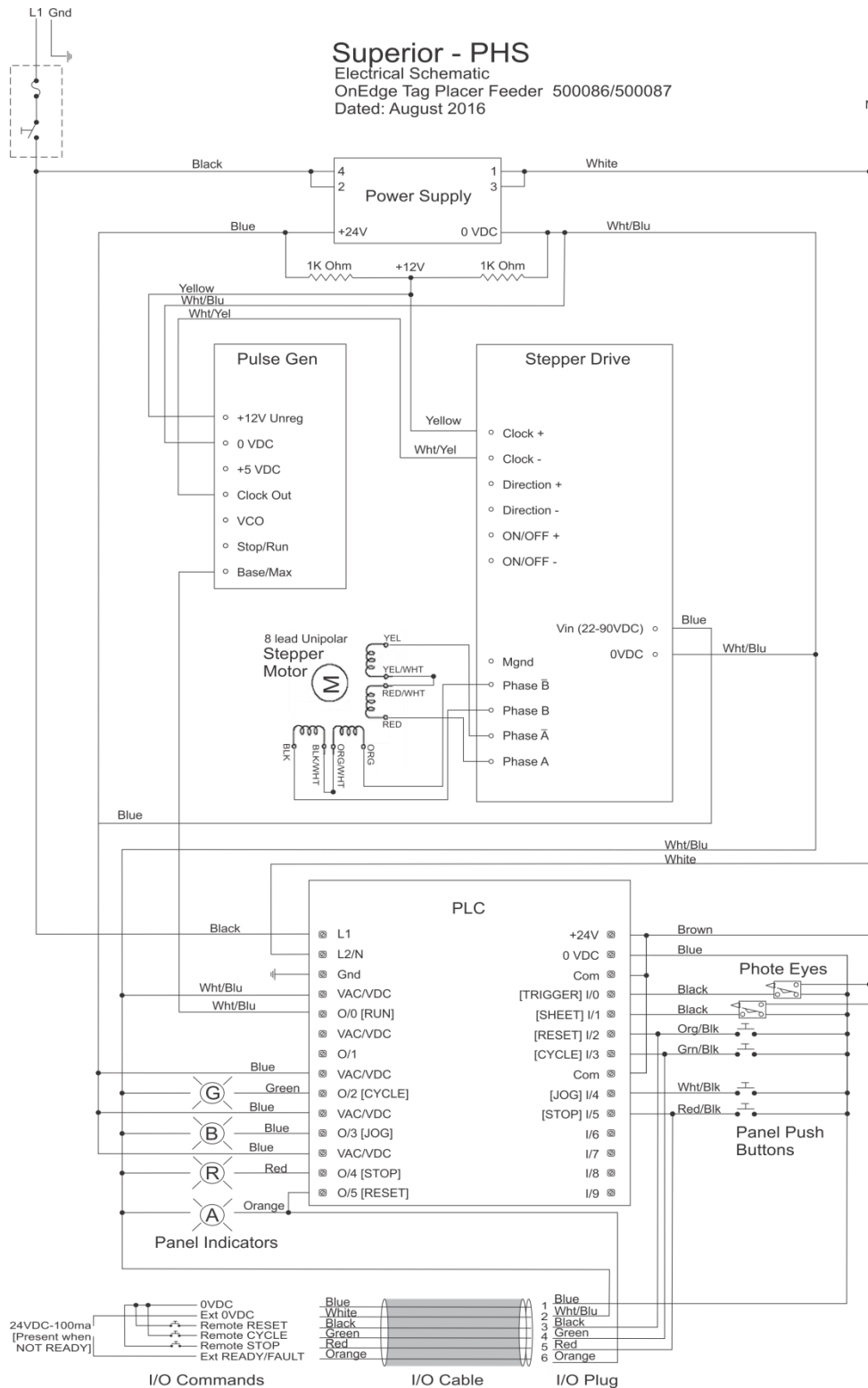
Wipe sensors with a clean lint free cloth to clear any dust build up. Recheck the adjustment of the sensors if they were moved during cleaning and reset.

Machine

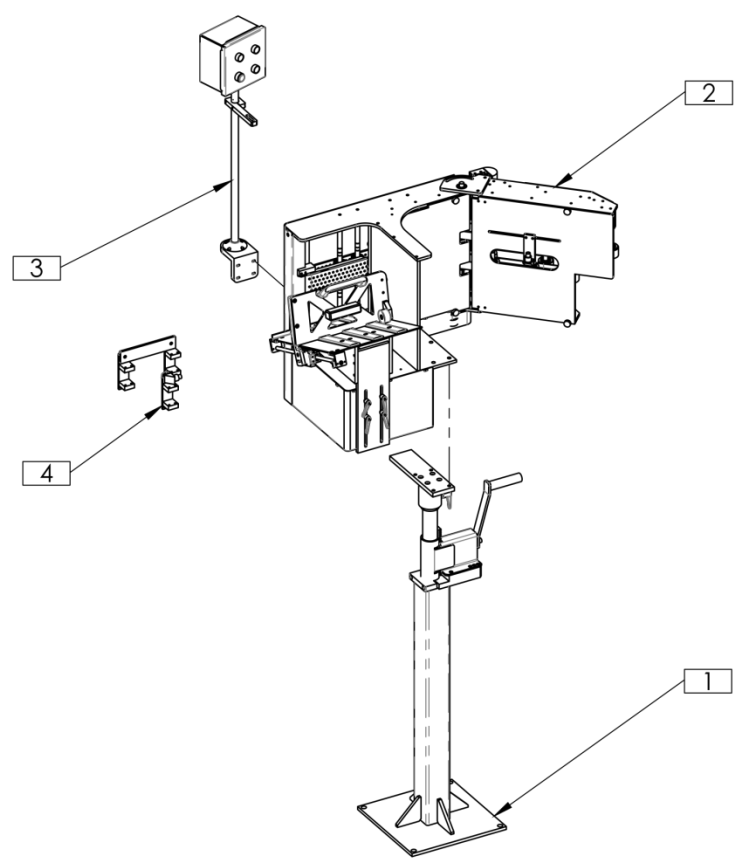
It is always best to keep machines clean. Keep them dusted and free of spills.

Always inspect your machine for loose or damaged items and replace them immediately.

WIRING SCHEMATIC



ILLUSTRATED PARTS



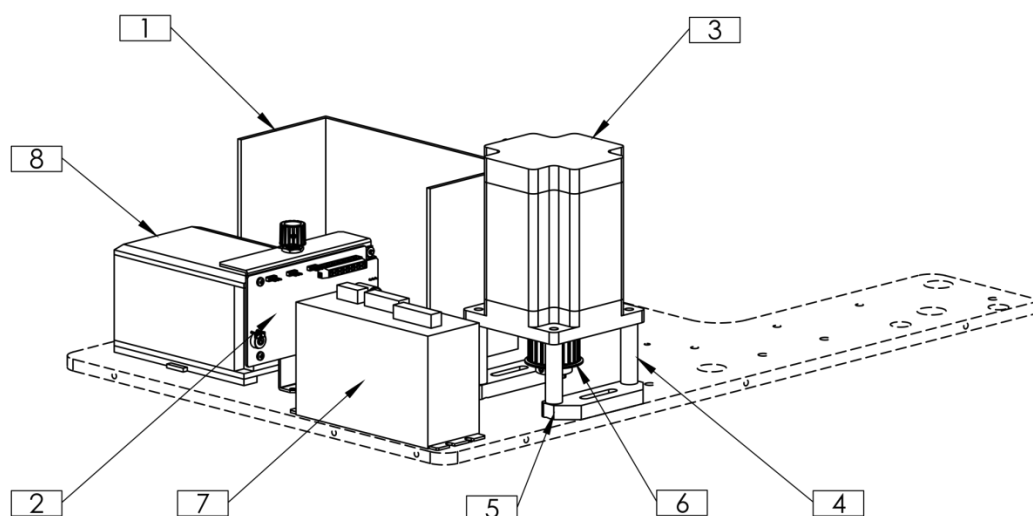
| ITEM NO. | PartNo | DESCRIPTION | QTY. |
|----------|--------|---------------------------|------|
| 1 | 400291 | JACK STAND ASSEMBLY | 1 |
| 2 | 400324 | FEEDER ASSEMBLY | 1 |
| 3 | 400329 | CONTROL ASSEMBLY | 1 |
| 4 | 400303 | PHOTO EYE SENSOR ASSEMBLY | 1 |

PROPRIETARY AND CONFIDENTIAL
 THE INFORMATION CONTAINED IN THIS DRAWING IS THE SOLE PROPERTY OF SUPERIOR PAPER HANDLING SOLUTIONS. ANY REPRODUCTION IN PART OR AS A WHOLE WITHOUT THE WRITTEN PERMISSION OF SUPERIOR PAPER HANDLING SOLUTIONS IS PROHIBITED.



Assembly Number: **500086**

ELECTRICAL COMPONENTS



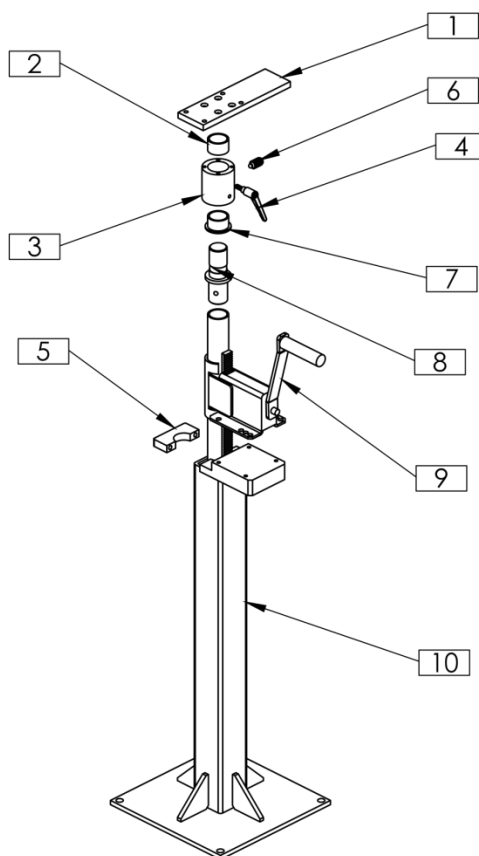
| ITEM NO. | PartNo | DESCRIPTION | QTY. |
|----------|---------|-----------------|------|
| 1 | 112012 | POWER SUPPLY | 1 |
| 2 | 112011 | PULSE GENERATOR | 1 |
| 3 | 100236A | STEPPER MOTOR | 1 |
| 4 | 302060 | STAND OFF | 4 |
| 5 | 302061 | MOUNT BRACKET | 2 |
| 6 | 350119 | TIMING PULLEY | 1 |
| 7 | 112077 | STEPPER DRIVE | 1 |
| 8 | 112049 | CONTROLLER | 1 |

PROPRIETARY AND CONFIDENTIAL
 THE INFORMATION CONTAINED IN THIS DRAWING IS THE SOLE PROPERTY OF SUPERIOR PAPER HANDLING SOLUTIONS. ANY REPRODUCTION IN PART OR AS A WHOLE WITHOUT THE WRITTEN PERMISSION OF SUPERIOR PAPER HANDLING SOLUTIONS IS PROHIBITED.

Superior
 PAPER HANDLING SOLUTIONS

Assembly Number: **400288**

JACK STAND



| ITEM NO. | PartNo | DESCRIPTION | QTY |
|----------|--------|------------------------|-----|
| 1 | 302072 | MOUNTING ADAPTOR PLATE | 1 |
| 2 | 350053 | BUSHING | 1 |
| 3 | 302074 | SWIVEL POST SLEEVE | 1 |
| 4 | 350048 | HANDLE | 1 |
| 5 | 302070 | TOP PLATE | 1 |
| 6 | 350052 | SPRING PLUNGER | 1 |
| 7 | 350041 | FLANGE BUSHING | 1 |
| 8 | 302073 | TUBE SHAFT | 1 |
| 9 | 350083 | JACK | 1 |
| 10 | 400290 | STAND WELDMENT | 1 |

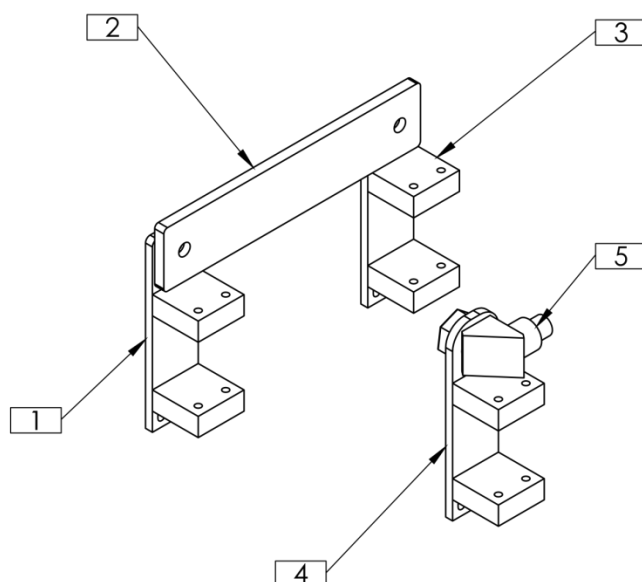
PROPRIETARY AND CONFIDENTIAL

THE INFORMATION CONTAINED IN THIS DRAWING IS THE SOLE PROPERTY OF SUPERIOR PAPER HANDLING SOLUTIONS. ANY REPRODUCTION IN PART OR AS A WHOLE WITHOUT THE WRITTEN PERMISSION OF SUPERIOR PAPER HANDLING SOLUTIONS IS PROHIBITED.

Superior
 PAPER HANDLING SOLUTIONS

Assembly Number: **400291**

PHOTO EYE SENSOR



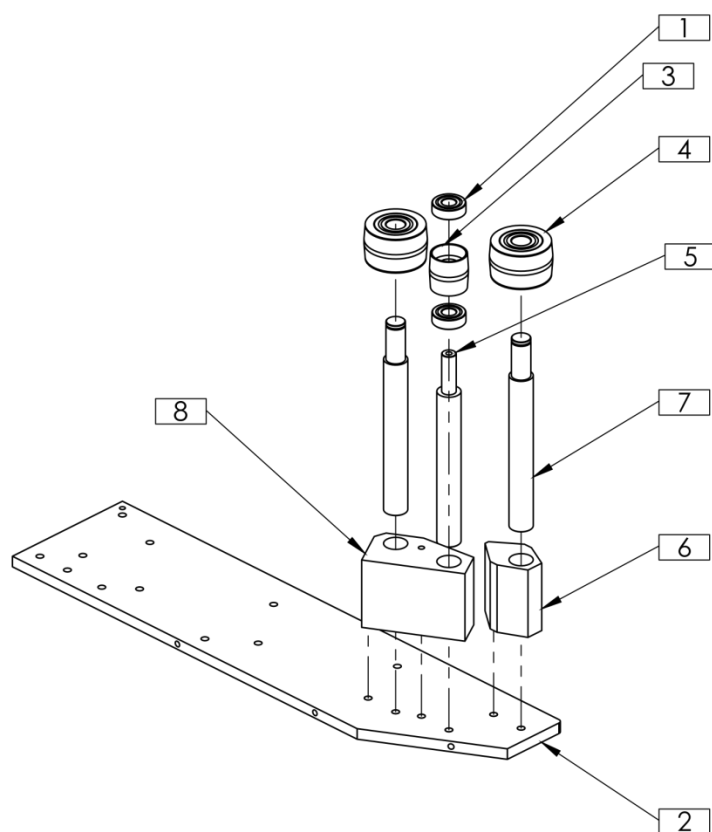
| ITEM NO. | PartNo | DESCRIPTION | QTY. |
|----------|--------|-------------------|------|
| 1 | 302076 | REFLECTOR BRACKET | 2 |
| 2 | 350058 | REFLECTOR | 1 |
| 3 | 302077 | SENSOR BRACKET | 6 |
| 4 | 302075 | BRACKET | 1 |
| 5 | 350039 | PHOTO-EYE SENSOR | 1 |

PROPRIETARY AND CONFIDENTIAL
 THE INFORMATION CONTAINED IN THIS DRAWING IS THE SOLE PROPERTY OF SUPERIOR PAPER HANDLING SOLUTIONS. ANY REPRODUCTION IN PART OR AS A WHOLE WITHOUT THE WRITTEN PERMISSION OF SUPERIOR PAPER HANDLING SOLUTIONS IS PROHIBITED.

Superior
 PAPER HANDLING SOLUTIONS

Assembly Number: **400303**

THIRD STAGE DISCHARGE TOP



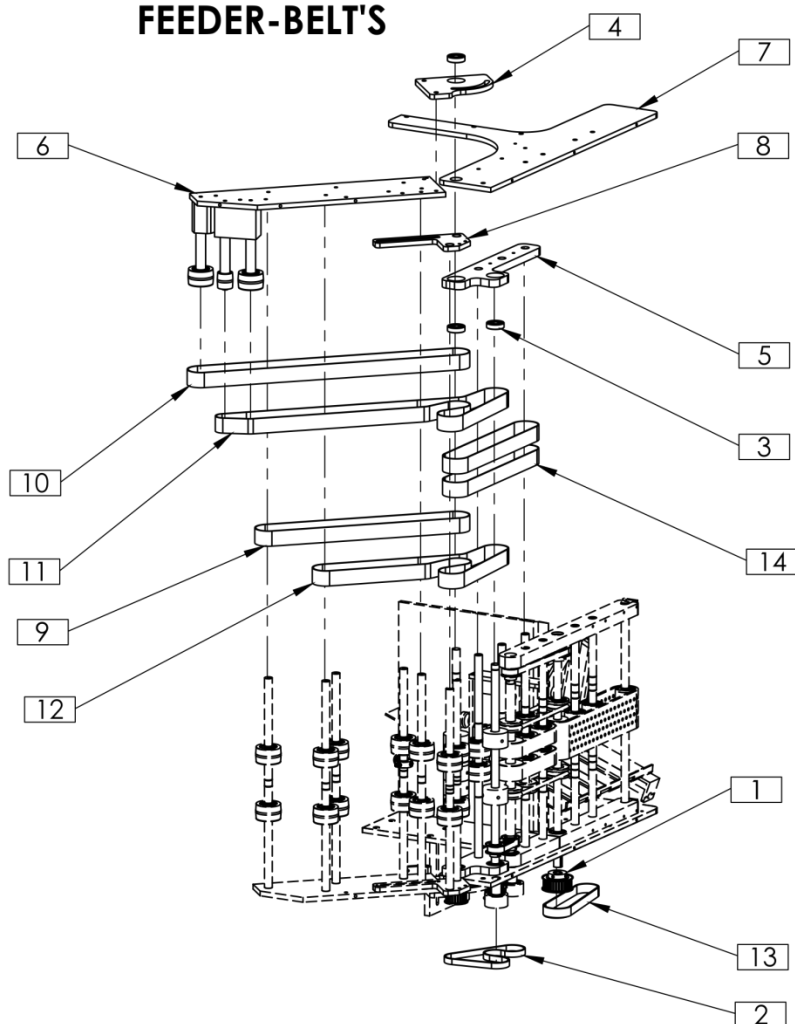
| ITEM NO. | PartNo | DESCRIPTION | QTY. |
|----------|--------|-----------------------------------|------|
| 1 | 100135 | BEARING | 2 |
| 2 | 302003 | BELT PLATE | 1 |
| 3 | 302052 | IDLER PULLEY | 1 |
| 4 | 100148 | PULLEY IDLER CROWN SHORT ASSEMBLY | 2 |
| 5 | 302213 | IDLER SHAFT | 1 |
| 6 | 302214 | SUPPORT BLOCK | 1 |
| 7 | 302225 | IDLER SHAFT | 2 |
| 8 | 302215 | SHAFT SUPPORT BLOCK | 1 |

PROPRIETARY AND CONFIDENTIAL
 THE INFORMATION CONTAINED IN THIS DRAWING IS THE SOLE PROPERTY OF SUPERIOR PAPER HANDLING SOLUTIONS. ANY REPRODUCTION IN PART OR AS A WHOLE WITHOUT THE WRITTEN PERMISSION OF SUPERIOR PAPER HANDLING SOLUTIONS IS PROHIBITED.

Superior
 PAPER HANDLING SOLUTIONS

Assembly Number: **400314**

FEEDER-BELT'S



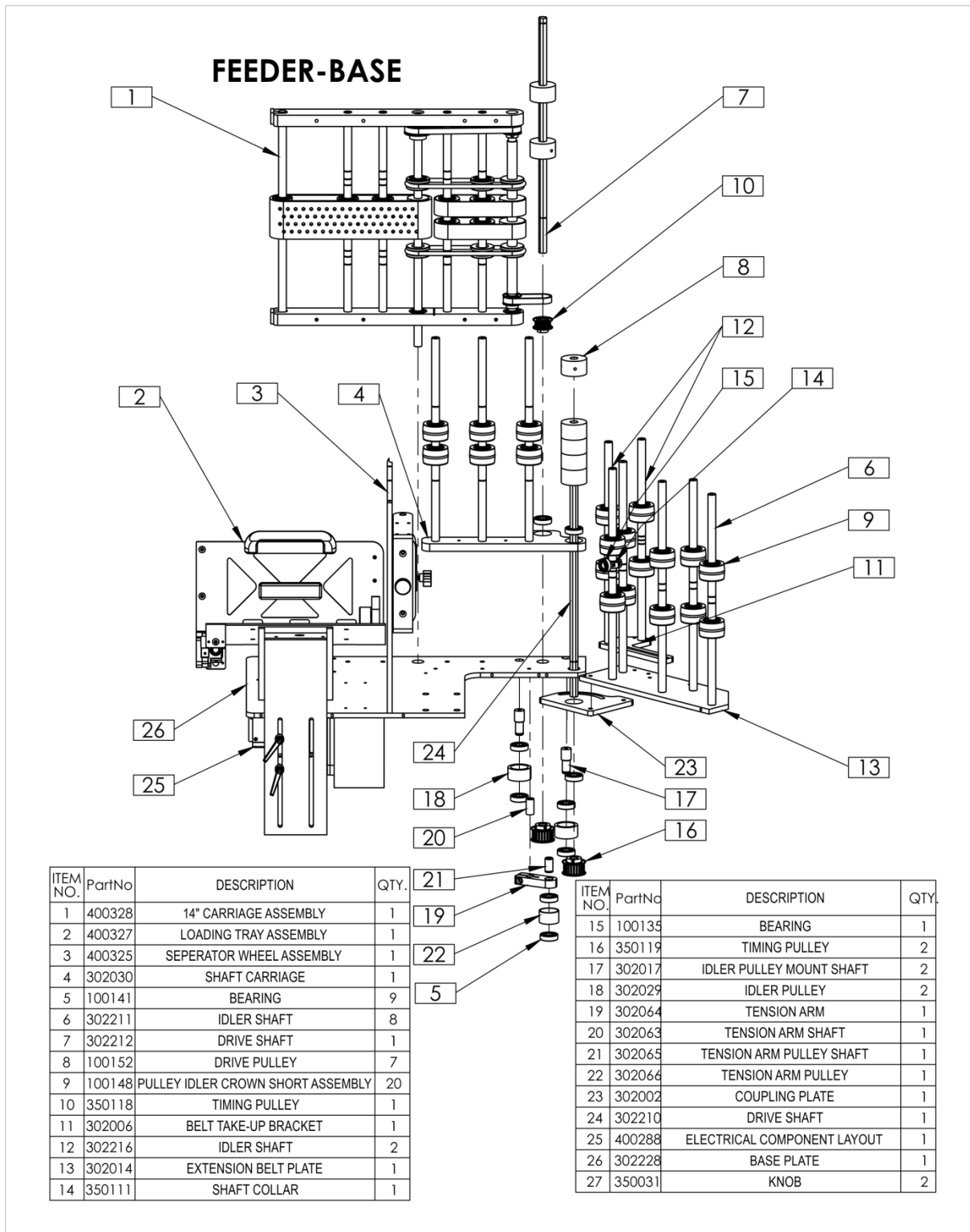
| ITEM NO. | PartNo | DESCRIPTION | QTY. |
|----------|--------|------------------------|------|
| 1 | 350021 | TIMING PULLEY | 1 |
| 2 | 350046 | TIMING BELT | 1 |
| 3 | 100141 | BEARING | 3 |
| 4 | 302002 | COUPLING PLATE | 1 |
| 5 | 302030 | SHAFT CARRIAGE | 1 |
| 6 | 400314 | DISCHARGE TOP ASSEMBLY | 1 |
| 7 | 302001 | TOP PLATE | 1 |
| 8 | 302005 | BELT TAKE-UP BRACKET | 1 |
| 9 | 112006 | SHORT BELT | 1 |
| 10 | 112005 | LONG BELT | 1 |
| 11 | 112003 | OUTSIDE BELT | 1 |
| 12 | 112004 | OUTSIDE BELT | 1 |
| 13 | 112008 | DRIVE BELT | 1 |
| 14 | 112001 | INSIDE BELT | 2 |
| 15 | 350031 | KNOB | 2 |

PROPRIETARY AND CONFIDENTIAL

THE INFORMATION CONTAINED IN THIS DRAWING IS THE SOLE PROPERTY OF SUPERIOR PAPER HANDLING SOLUTIONS. ANY REPRODUCTION IN PART OR AS A WHOLE WITHOUT THE WRITTEN PERMISSION OF SUPERIOR PAPER HANDLING SOLUTIONS IS PROHIBITED.

Superior
 PAPER HANDLING SOLUTIONS

Assembly Number: **400324**

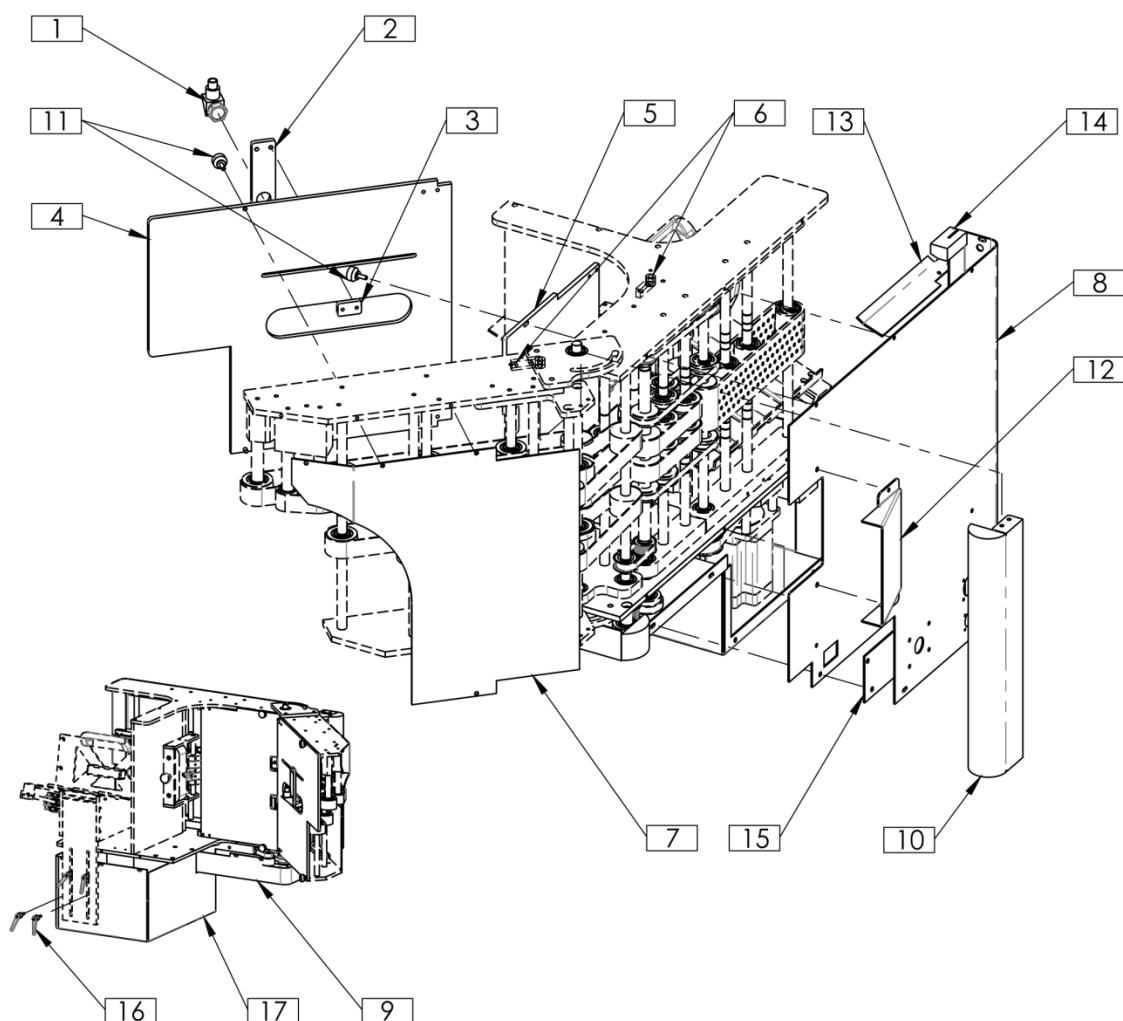


PROPRIETARY AND CONFIDENTIAL
THE INFORMATION CONTAINED IN THIS DRAWING IS THE SOLE PROPERTY OF SUPERIOR PAPER HANDLING SOLUTIONS. ANY REPRODUCTION IN PART OR AS A WHOLE WITHOUT THE WRITTEN PERMISSION OF SUPERIOR PAPER HANDLING SOLUTIONS IS PROHIBITED.

Superior
PAPER HANDLING SOLUTIONS

Assembly Number: **400324**

FEEDER-COVER'S



| ITEM NO. | PartNo | DESCRIPTION | QTY. |
|----------|--------|---------------------|------|
| 1 | 350039 | PHOTO-EYE SENSOR | 1 |
| 2 | 302059 | PHOTO-EYE BRACET | 1 |
| 3 | 302058 | SLIDER NUT | 1 |
| 4 | 302222 | INSIDE COVER | 1 |
| 5 | 302221 | INSIDE COVER | 1 |
| 6 | 302011 | HINGE | 4 |
| 7 | 400326 | BACK COVER ASSEMBLY | 1 |
| 8 | 302220 | BACK COVER | 1 |
| 9 | 302007 | BOTTOM BELT COVER | 1 |

| ITEM NO. | PartNo | DESCRIPTION | QTY. |
|----------|--------|-----------------------|------|
| 10 | 302224 | WRAP COVER | 1 |
| 11 | 350038 | THUMB SCREW | 4 |
| 12 | 302078 | BELT GUARD | 1 |
| 13 | 302080 | HOLD DOWN GUIDE | 1 |
| 14 | 302079 | LABEL HOLD DOWN CLAMP | 1 |
| 15 | 302231 | REAR BELT GUARD | 1 |
| 16 | 350031 | KNOB | 4 |
| 17 | 302227 | BOTTOM HOOD | 1 |

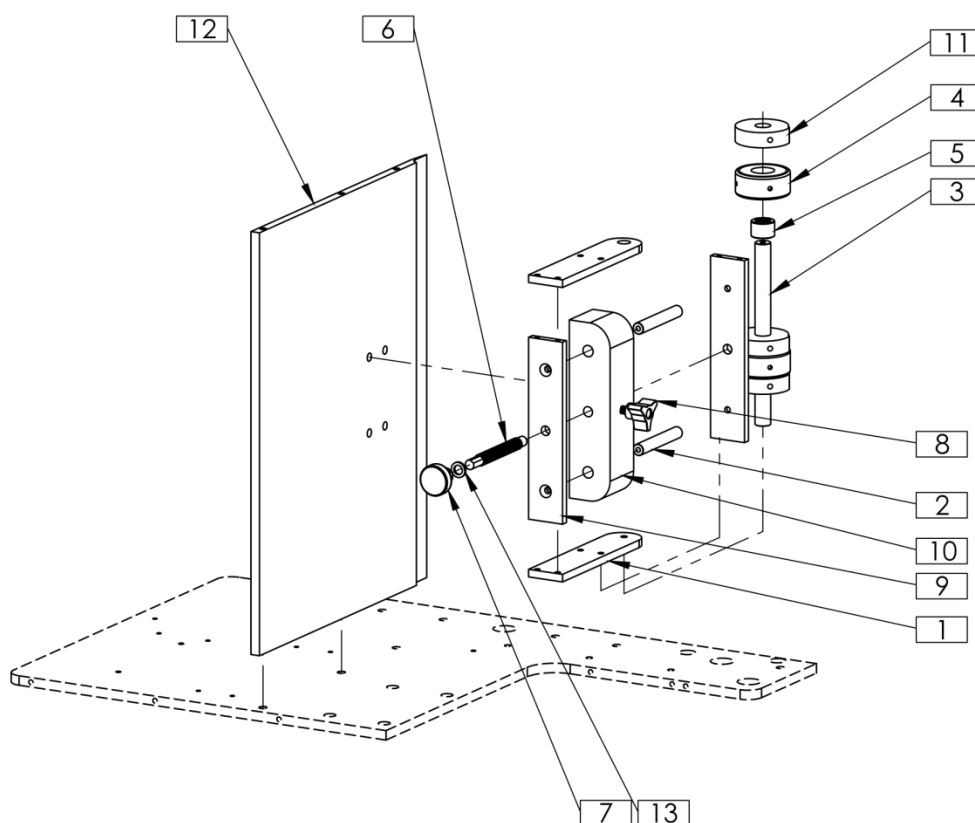
PROPRIETARY AND CONFIDENTIAL

THE INFORMATION CONTAINED IN THIS DRAWING IS THE SOLE PROPERTY OF SUPERIOR PAPER HANDLING SOLUTIONS. ANY REPRODUCTION IN PART OR AS A WHOLE WITHOUT THE WRITTEN PERMISSION OF SUPERIOR PAPER HANDLING SOLUTIONS IS PROHIBITED.

Superior
 PAPER HANDLING SOLUTIONS

Assembly Number: **400324**

SEPERATOR WHEEL



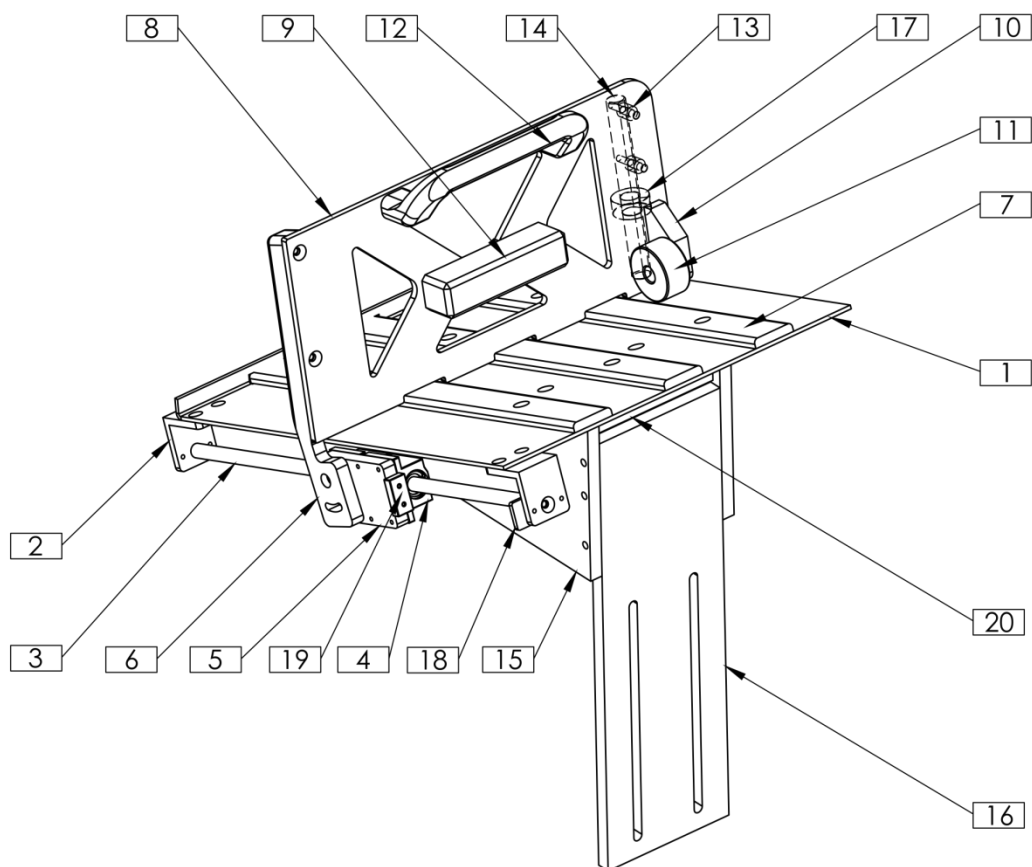
| ITEM NO. | PartNo | DESCRIPTION | QTY. |
|----------|--------|------------------------|------|
| 1 | 302044 | SUPPORT PLATE | 2 |
| 2 | 302045 | SLIDE SHAFT | 2 |
| 3 | 302046 | MOUNTING SHAFT | 1 |
| 4 | 350016 | ROLLER | 2 |
| 5 | 350036 | BEARING | 2 |
| 6 | 302047 | THREAD ROD | 1 |
| 7 | 350035 | KNOB | 1 |
| 8 | 350037 | KNOB | 1 |
| 9 | 302048 | SUPPORT PLATE | 2 |
| 10 | 302050 | ADJUSTMENT BLOCK | 1 |
| 11 | 302049 | ROLLER SPACER | 3 |
| 12 | 302226 | MAIN SIDE PLATE | 1 |
| 13 | 100378 | NYLON WASHER SEPARATOR | 1 |

PROPRIETARY AND CONFIDENTIAL
 THE INFORMATION CONTAINED IN THIS DRAWING IS THE SOLE PROPERTY OF SUPERIOR PAPER HANDLING SOLUTIONS. ANY REPRODUCTION IN PART OR AS A WHOLE WITHOUT THE WRITTEN PERMISSION OF SUPERIOR PAPER HANDLING SOLUTIONS IS PROHIBITED.

Superior
 PAPER HANDLING SOLUTIONS

Assembly Number: **400325**

LOADING TRAY



| ITEM NO. | PartNo | DESCRIPTION | Default/Qty. |
|----------|--------|------------------------|--------------|
| 1 | 302021 | ANGLED LOADING TRAY | 1 |
| 2 | 302022 | SHAFT SUPPORT | 2 |
| 3 | 302023 | REST SHAFT | 1 |
| 4 | 350028 | LINEAR BALL BUSHING | 2 |
| 5 | 302034 | BACK SLIDE REST | 1 |
| 6 | 302035 | BACK SLIDE REST, TOP | 1 |
| 7 | 302025 | LOAD TRAY SKID PAD | 3 |
| 8 | 302036 | REST PLATE | 1 |
| 9 | 302037 | SLIDE WEIGHT | 1 |
| 10 | 302038 | ROLLER STAND OFF BLOCK | 1 |

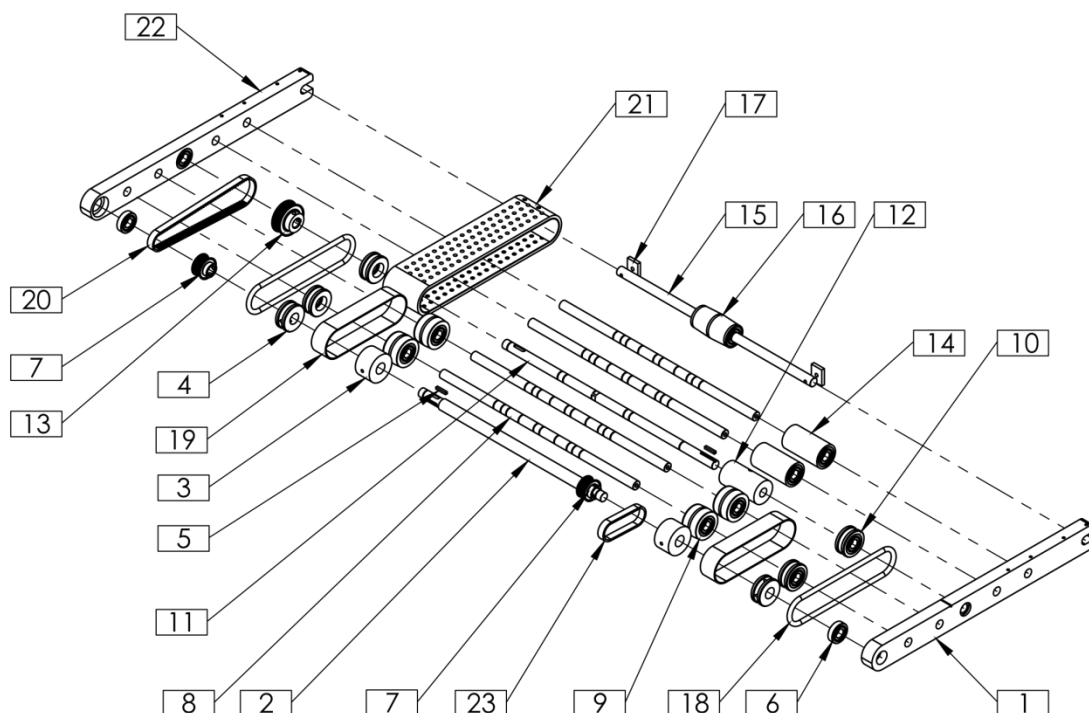
| ITEM NO. | PartNo | DESCRIPTION | Default/Qty. |
|----------|--------|---------------|--------------|
| 11 | 302039 | CAM ROLLER | 1 |
| 12 | 350029 | HANDLE | 1 |
| 13 | 350030 | SHAFT SPACER | 2 |
| 14 | 302040 | PUSH ROD | 1 |
| 15 | 302218 | GUSSET | 2 |
| 16 | 302217 | SUPPORT PLATE | 1 |
| 17 | 350032 | COLLAR | 1 |
| 18 | 302081 | HOPPER CATCH | 1 |
| 19 | 350117 | HOPPER MAGNET | 1 |
| 20 | 302219 | SUPPORT PLATE | 1 |

PROPRIETARY AND CONFIDENTIAL
 THE INFORMATION CONTAINED IN THIS DRAWING IS THE SOLE PROPERTY OF SUPERIOR PAPER HANDLING SOLUTIONS. ANY REPRODUCTION IN PART OR AS A WHOLE WITHOUT THE WRITTEN PERMISSION OF SUPERIOR PAPER HANDLING SOLUTIONS IS PROHIBITED.

Superior
 PAPER HANDLING SOLUTIONS

Assembly Number: **400327**

14" CARRIAGE ASSEMBLY



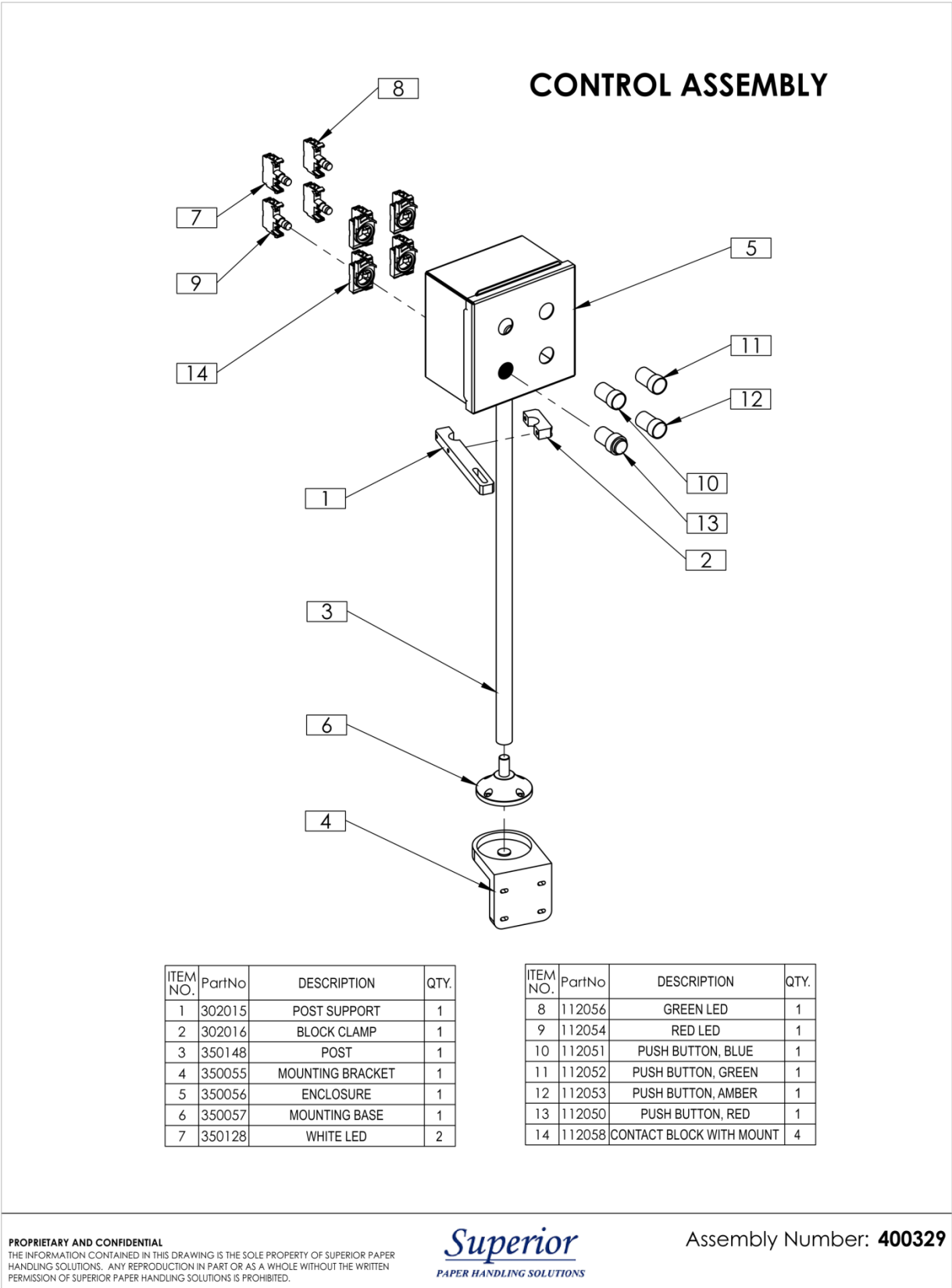
| ITEM NO. | PartNo | DESCRIPTION | QTY. |
|----------|----------|-----------------------------------|------|
| 1 | 400066 | CARRIAGE LH ASSEMBLY | 1 |
| 2 | 301963 | DRIVE SHAFT | 1 |
| 3 | 100152A | DRIVE PULLEY | 2 |
| 4 | 100191 A | PULLEY | 2 |
| 5 | 300650 | KEY | 2 |
| 6 | 100141 | BEARING | 2 |
| 7 | 100543 | TIMING PULLEY | 2 |
| 8 | 302229 | IDLER SHAFT | 4 |
| 9 | 100148 | PULLEY IDLER CROWN SHORT ASSEMBLY | 4 |
| 10 | 100144 | PULLEY O-RING ASSEMBLY | 4 |
| 11 | 100231 | MAIN DRIVE SHAFT CARRIAGE | 1 |
| 12 | 100151 | ROLLER DRIVER LONG | 1 |

| ITEM NO. | PartNo | DESCRIPTION | QTY. |
|----------|--------|---------------------------------|------|
| 13 | 100195 | TIMING PULLEY | 1 |
| 14 | 100147 | FLAT IDLER LONG ASSEMBLY | 2 |
| 15 | 100142 | IDLER SHAFT | 1 |
| 16 | 100150 | CROWN ROLLER IDLE LONG ASSEMBLY | 1 |
| 17 | 100161 | TENSION PLATE | 2 |
| 18 | 100156 | O-RING DISCHARGE | 2 |
| 19 | 100159 | BELT | 2 |
| 20 | 100196 | TIMING BELT | 1 |
| 21 | 100157 | FEED VACUUM BELT | 1 |
| 22 | 400053 | CARRIAGE RH ASSEMBLY | 1 |
| 23 | 350027 | TIMING BELT | 1 |

PROPRIETARY AND CONFIDENTIAL
THE INFORMATION CONTAINED IN THIS DRAWING IS THE SOLE PROPERTY OF SUPERIOR PAPER HANDLING SOLUTIONS. ANY REPRODUCTION IN PART OR AS A WHOLE WITHOUT THE WRITTEN PERMISSION OF SUPERIOR PAPER HANDLING SOLUTIONS IS PROHIBITED.

Superior
PAPER HANDLING SOLUTIONS

Assembly Number: **400328**



WARRANTY

SUPERIOR-PHS LIMITED WARRANTY

Superior Paper Handling Solutions, Inc. (Superior-PHS) warrants this product to be free from defect in materials and workmanship, when used under recommended operating conditions, for a period of one year from the date of original shipment.

If you discover a defect during the warranty period, please notify the distributor from whom you purchased this product, who will arrange for the replacement parts to be sent to you. Defective parts must be returned to Superior-PHS for credit on replacement parts. Shipping and labor costs are not included in this warranty. If the defect is not field repairable and if you return it to Superior-PHS during the warranty period, Superior-PHS will, at its sole option, repair or replace this product at no charge to you other than shipping charges to and from the facility in Minneapolis, MN.

If you return this product to Superior-PHS for warranty repair or replacement, please attach to the returned product your name and your company's name, address, telephone number and fax number; a description of the problem; and a copy of the bill of sale or invoice that shows the appropriate serial number for the product. All returns must be accompanied by an authorized Superior-PHS Returned Goods Authorization (RGA) number. An authorized RGA number can be obtained from the Superior-PHS distributor from whom you purchased this product.

This warranty applied only to products manufactured by Superior-PHS. This warranty does not apply if the product has been damaged by accident, abuse, misuse, neglect, improper maintenance, misapplication, or as a result of being modified with the written permission of Superior-PHS; or if the product's serial number has been removed or defaced. This warranty further does not apply to the failure of any rubber-based or consumable components including, but not limited to, rollers, bearings, belts, fuses, or bulbs.

ALL IMPLIED WARRANTIES INCLUDING WITHOUT LIMITATION THE IMPLIED WARRANTY OF FITNESS FOR A PARTICULAR PURPOSE AND THE IMPLIED WARRANTY OF MERCHANTABILITY ARE HEREBY DISCLAIMED.

Superior-PHS is not responsible for special, incidental, or consequential damages resulting from any breach of warranty or under any other legal theory, including lost profits, downtime, goodwill, or damage to or replacement of equipment or property.

This warranty and the remedies set forth above are exclusive and are in lieu of all others, oral or written, express or implied. There are no warranties that extend beyond the description on the face hereof. No Superior-PHS employee, distributor, or agent is authorized to make any modification, extension, or addition to this warranty.

NOTES

This image shows a single sheet of white paper with horizontal ruling lines. The lines are evenly spaced and run across the width of the page. There are no margins, text, or other markings on the paper.

Superior Paper Handling Solutions, Inc.
7150 Boone Ave North, Suite 130
Brooklyn Park, MN 55428

Tel: 763-546-9140
Fax: 763-546-8883

Email: info@superior-phs.com
Web: www.Superior-PHS.com